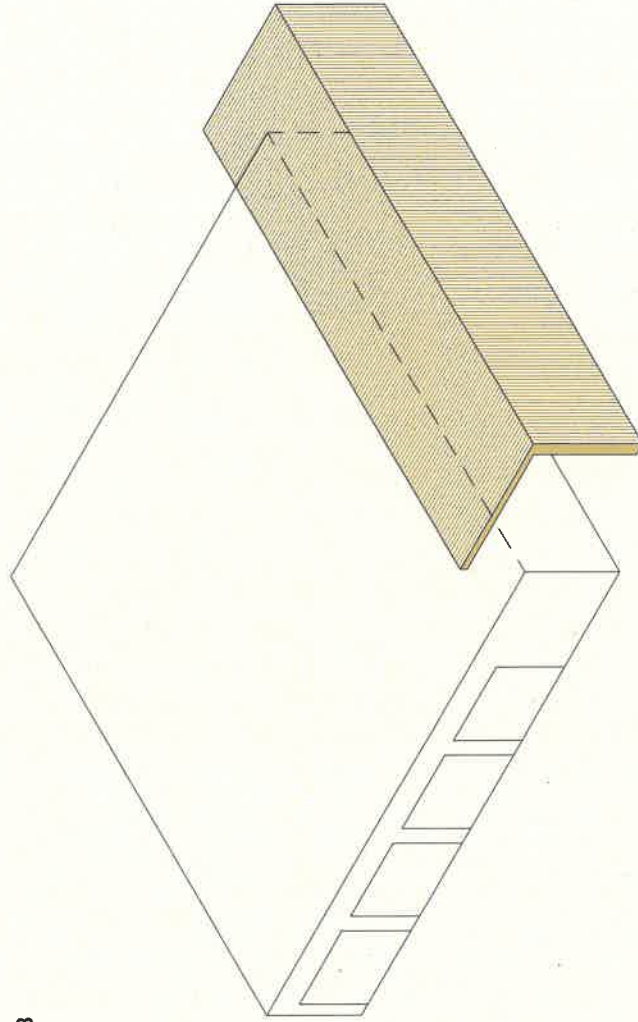
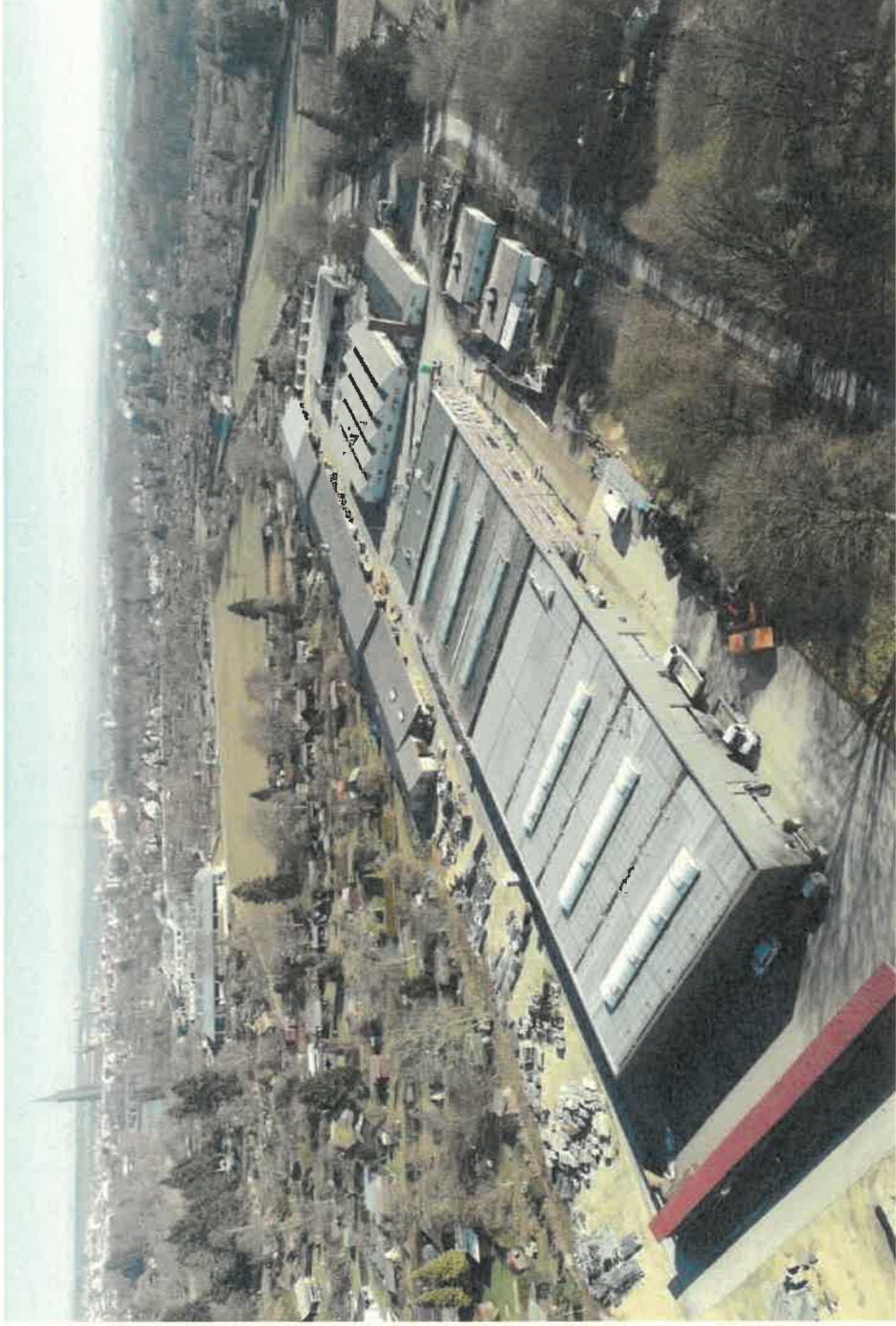
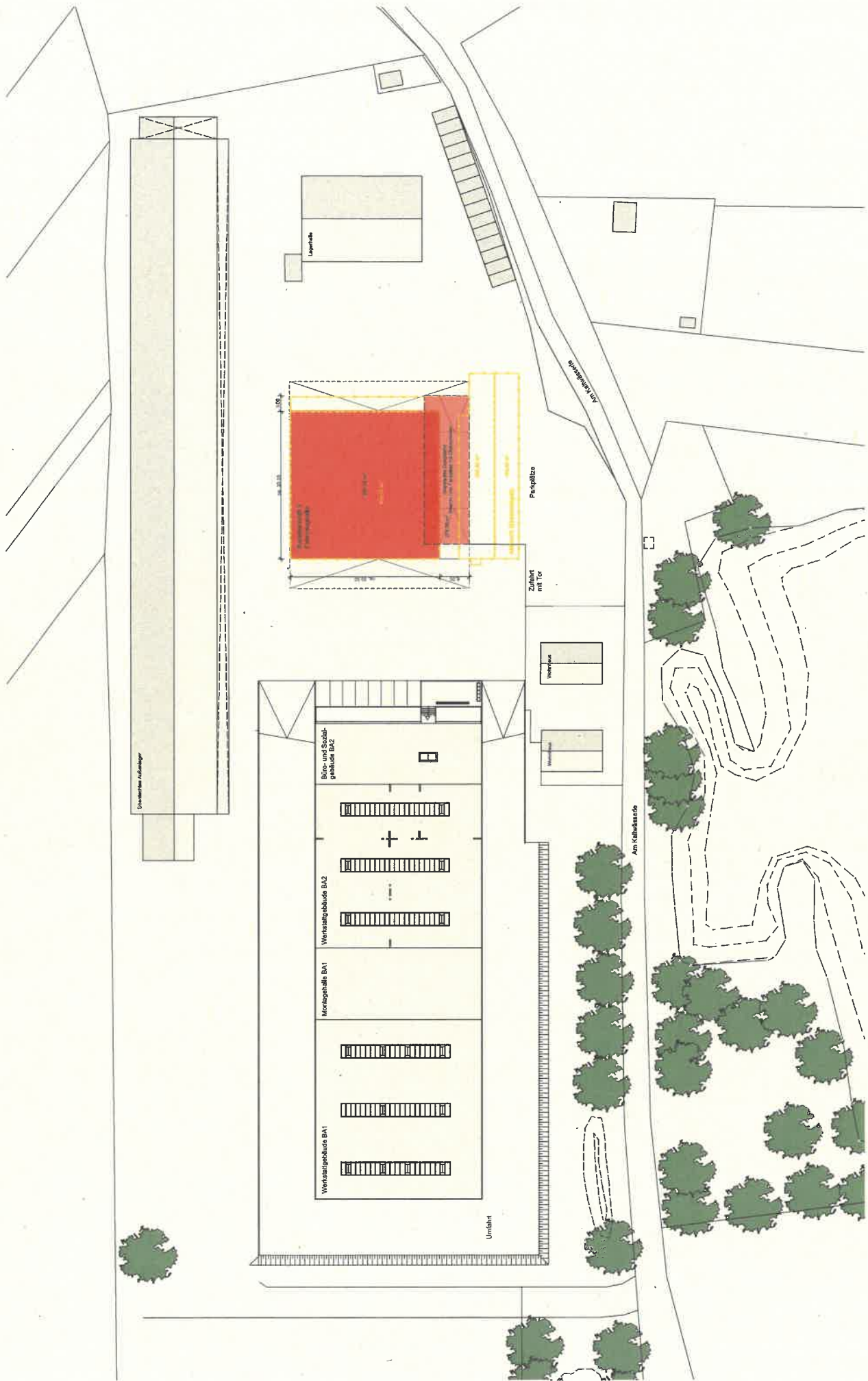


**BAUBETRIEBSHOF ULM | BA3**  
Fahrzeughalle mit Tank- und Waschlplatz

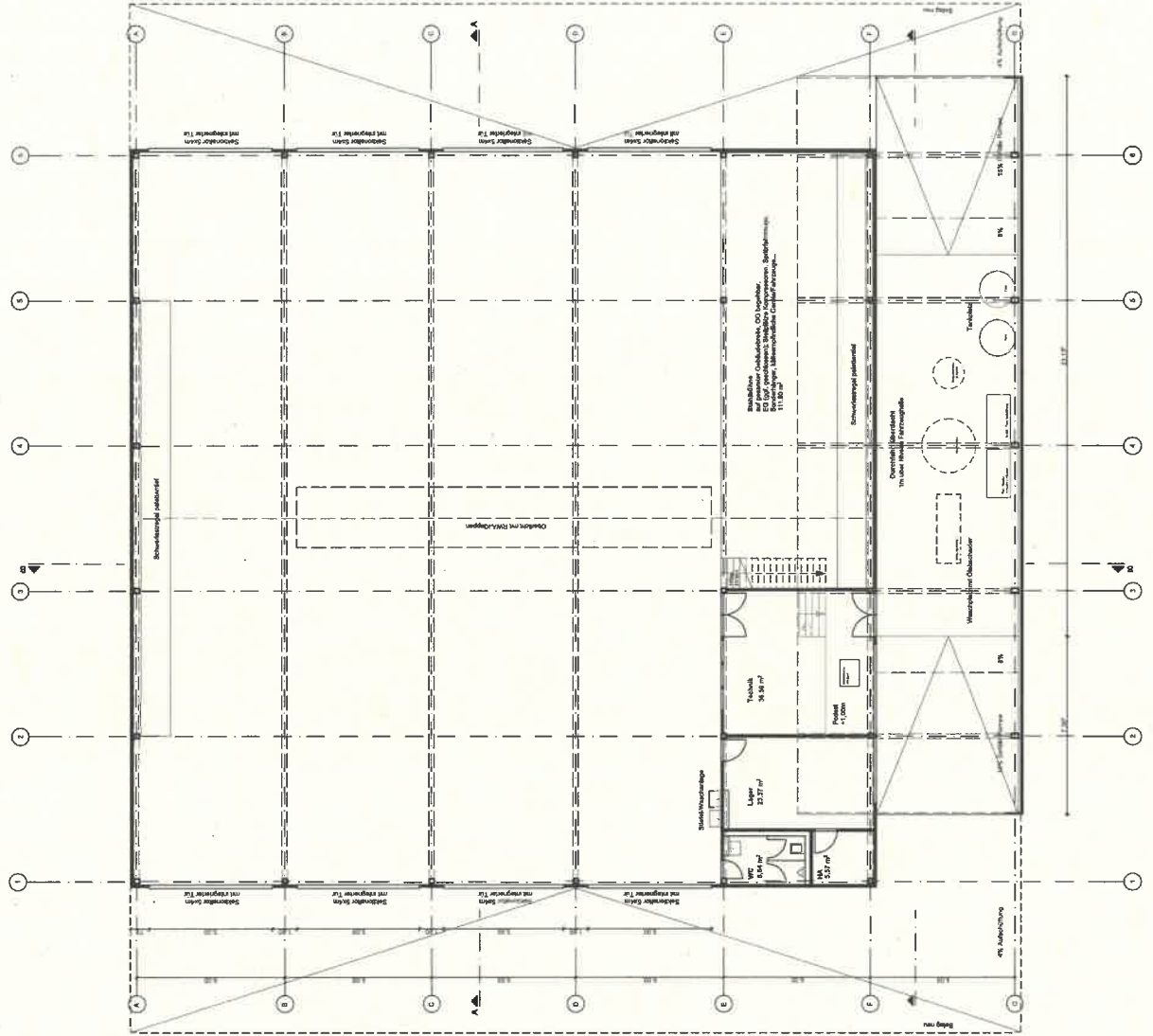




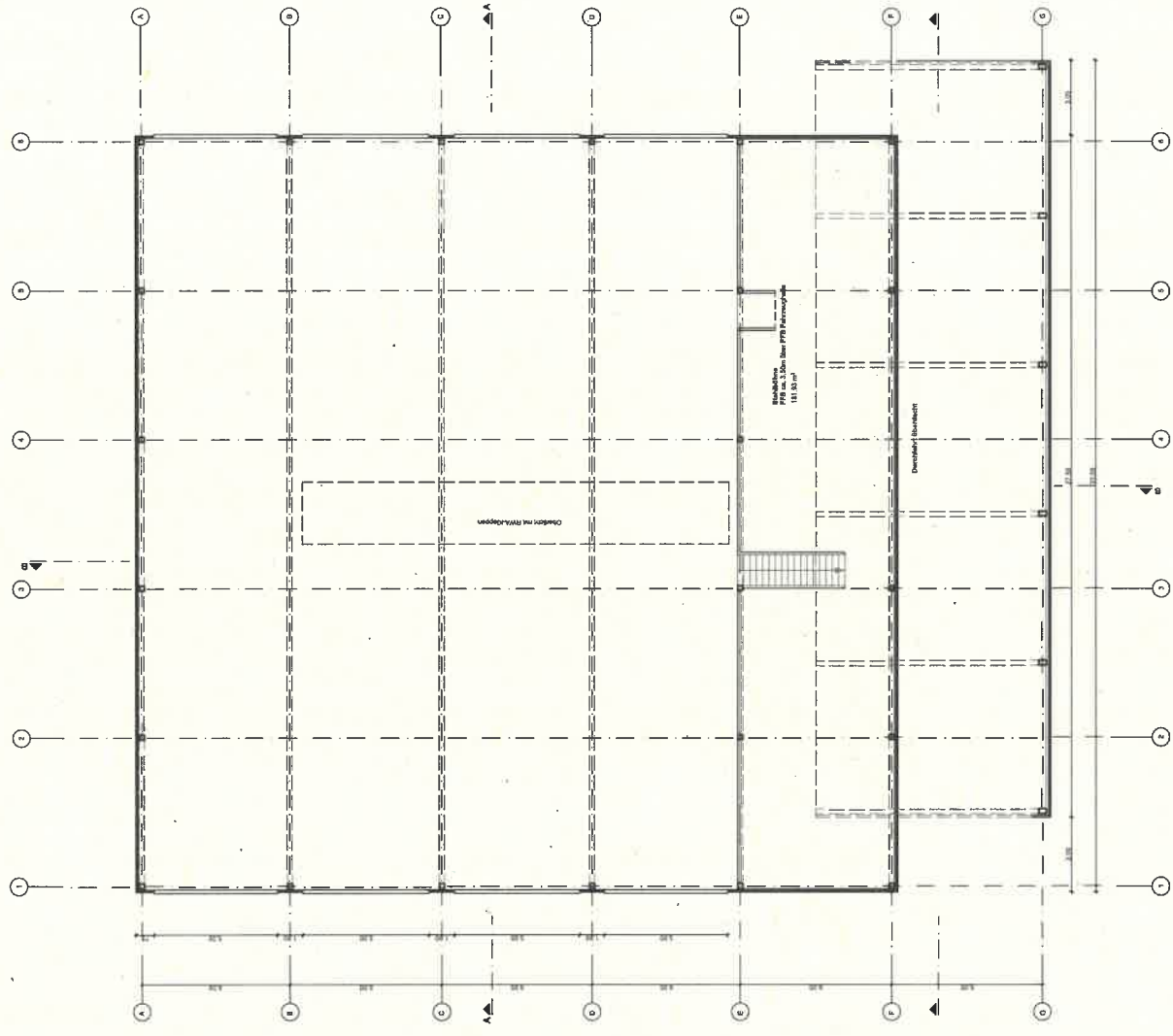
Situation Bestand



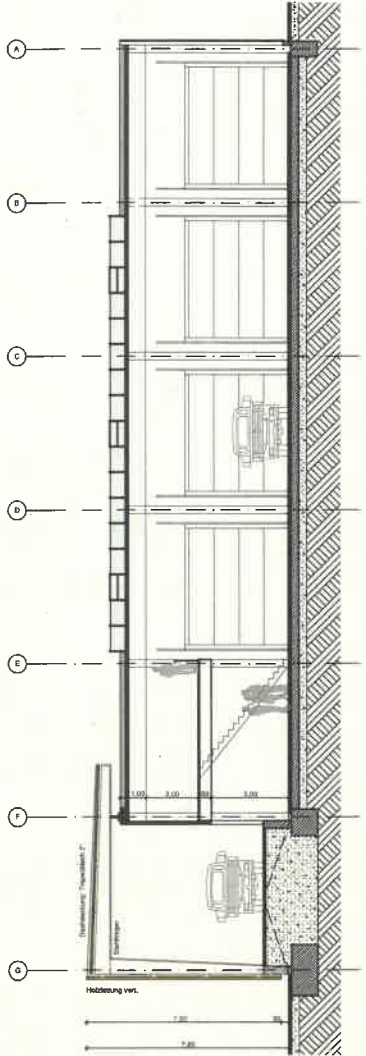
Lageplan



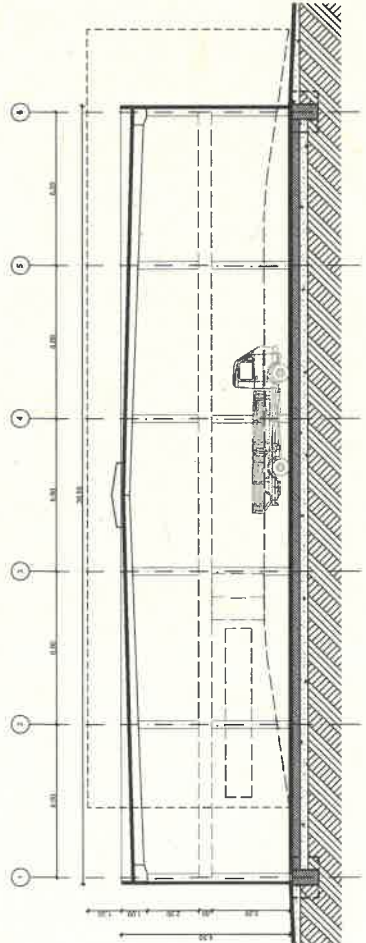
Grundriss EG M1:200



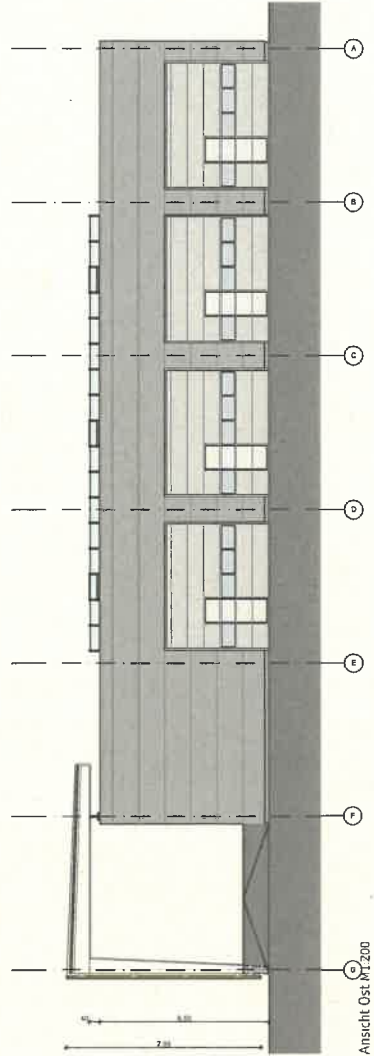
Grundriss Stahlbühne M1:200



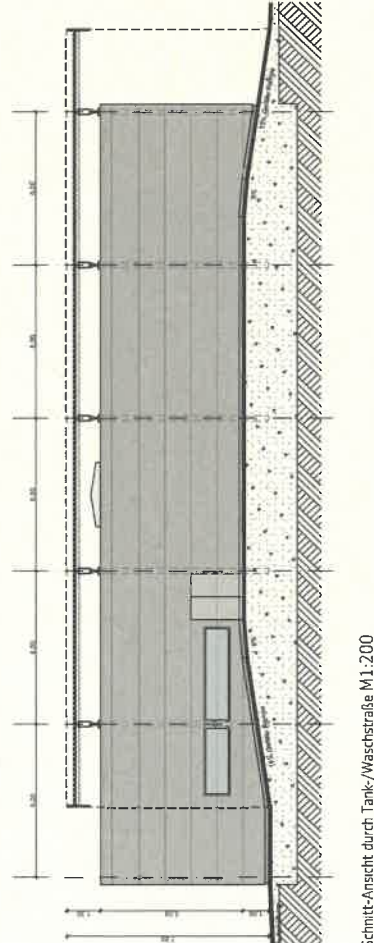
Schnitt B-B M1:200



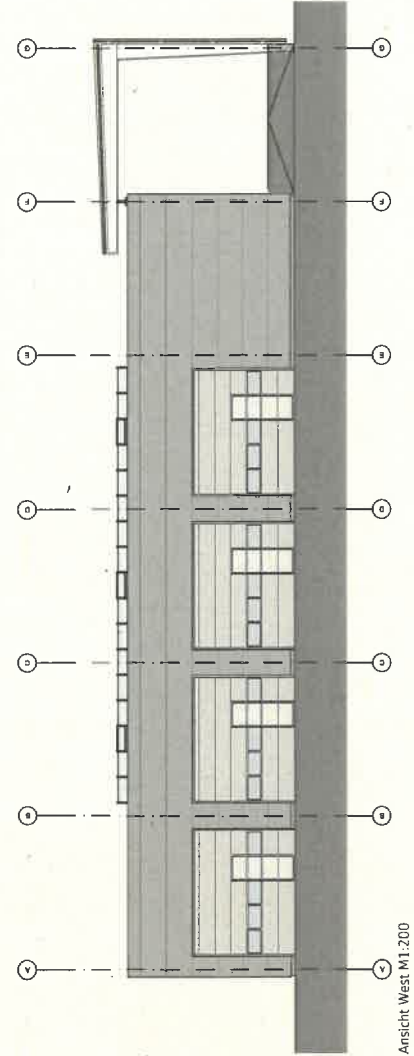
Schnitt A-A M1:200



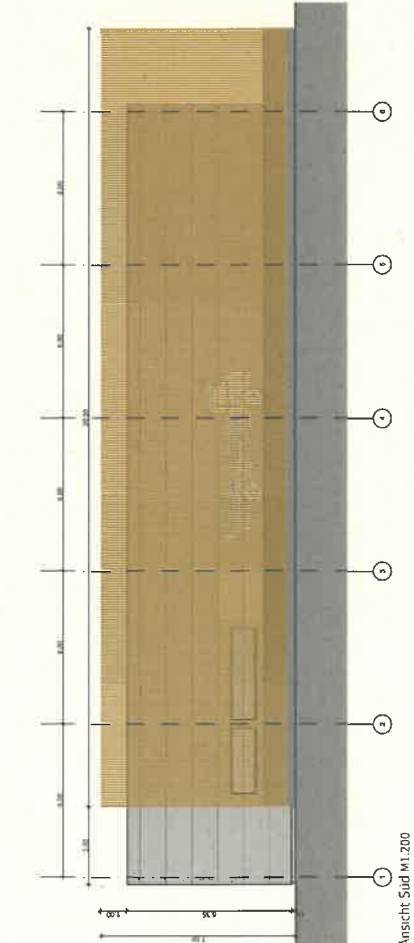
Ansicht Ost M1:200



Schnitt-Ansicht durch Tank-/Waschstraße M1:200



Ansicht West M1:200



Ansicht Süd M1:200

E

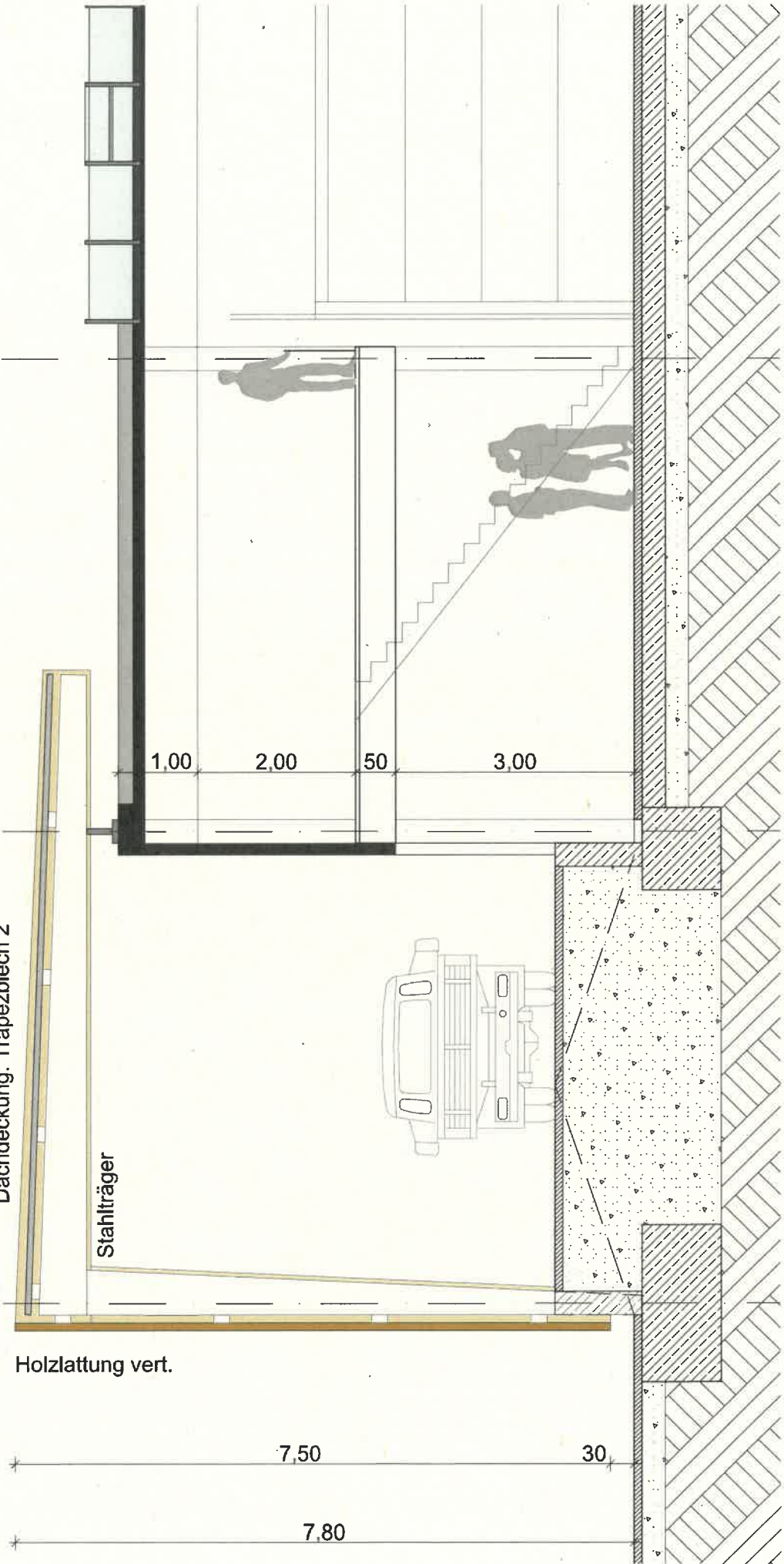
F

G

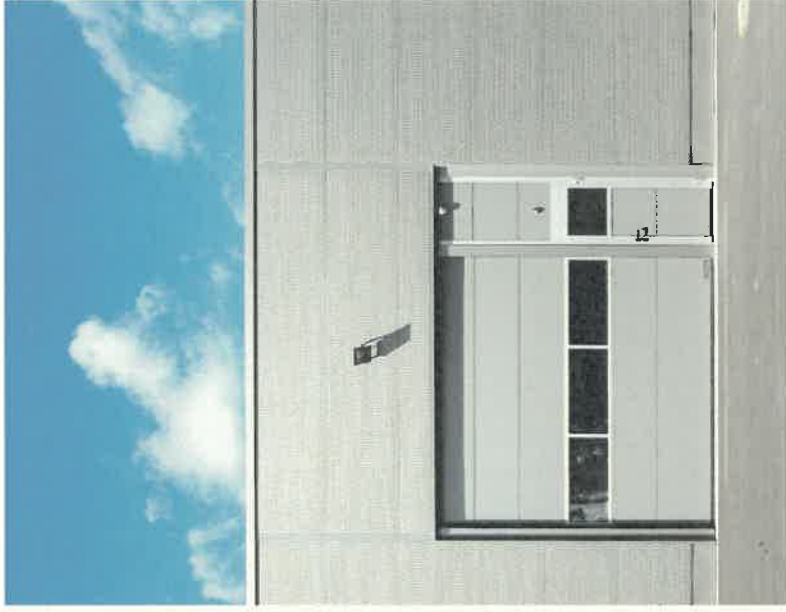
Dachdeckung: Trapezblech 2°

Stahlträger

Holzlattung vert.



Detaillschnitt: 1:50



Volumen und Fassadengestaltung Fahrgasthalle analog zu BA1/2





Ausbildung einer prominenten Südfassade als 'Gesicht'