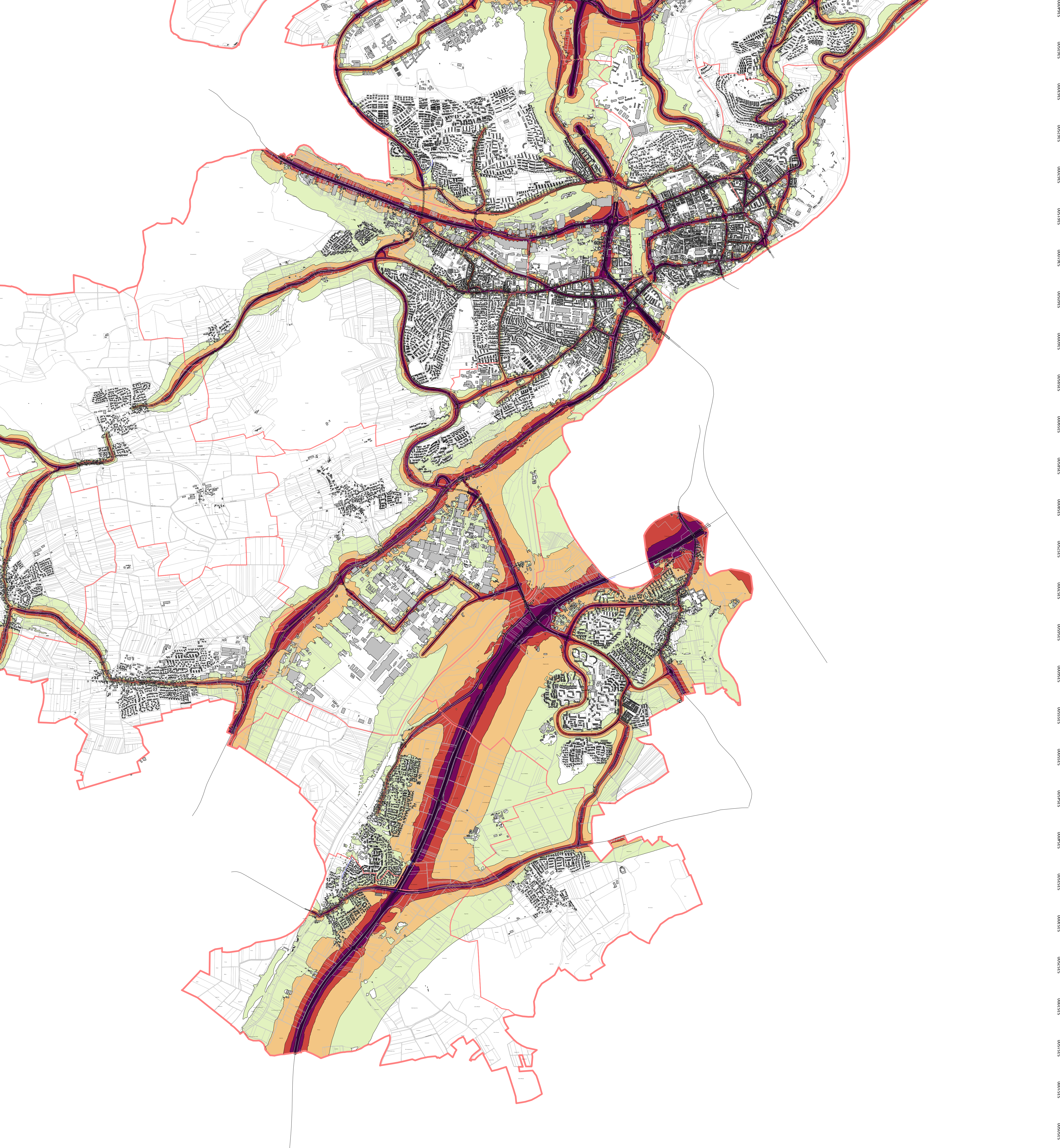
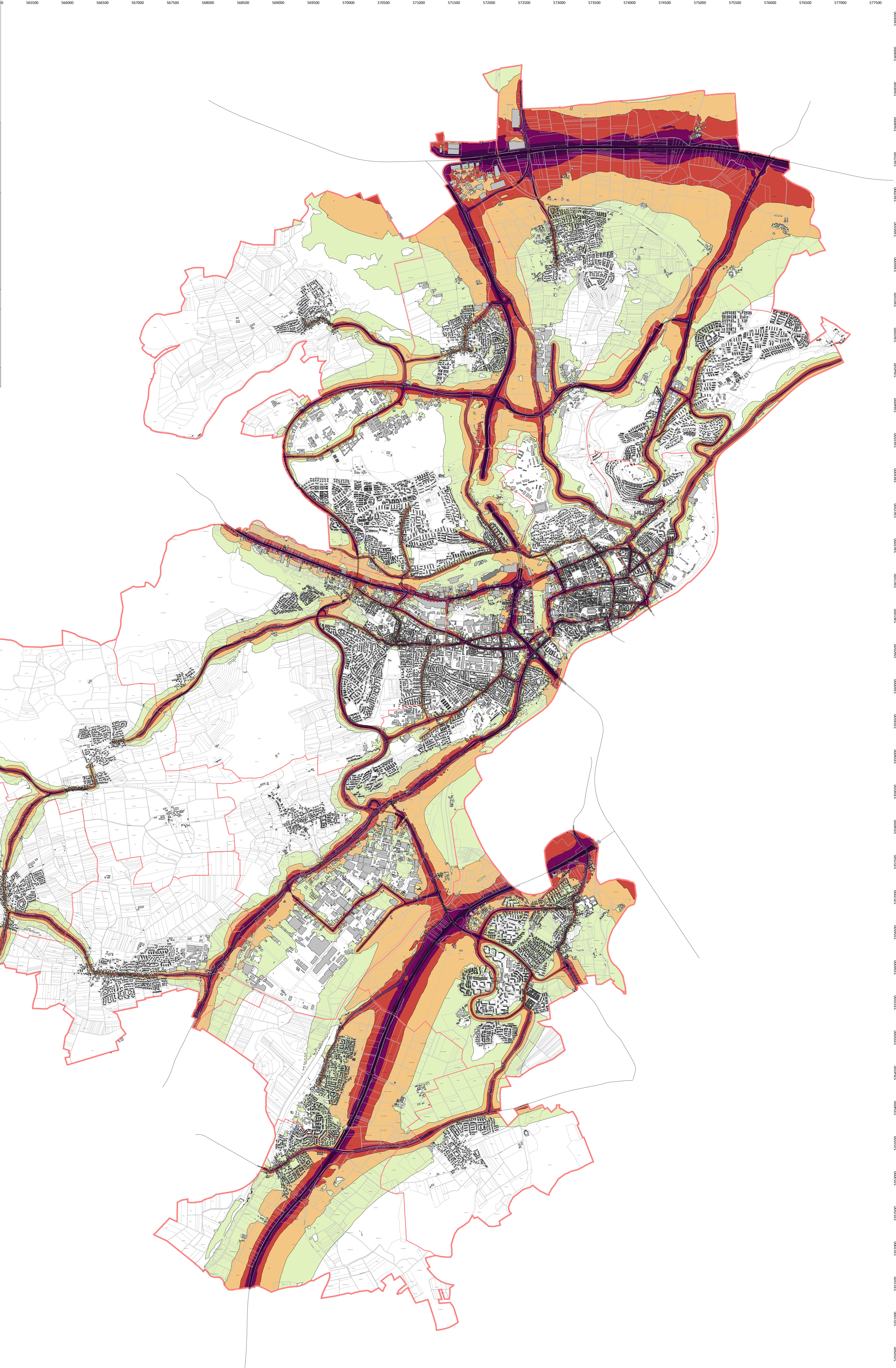
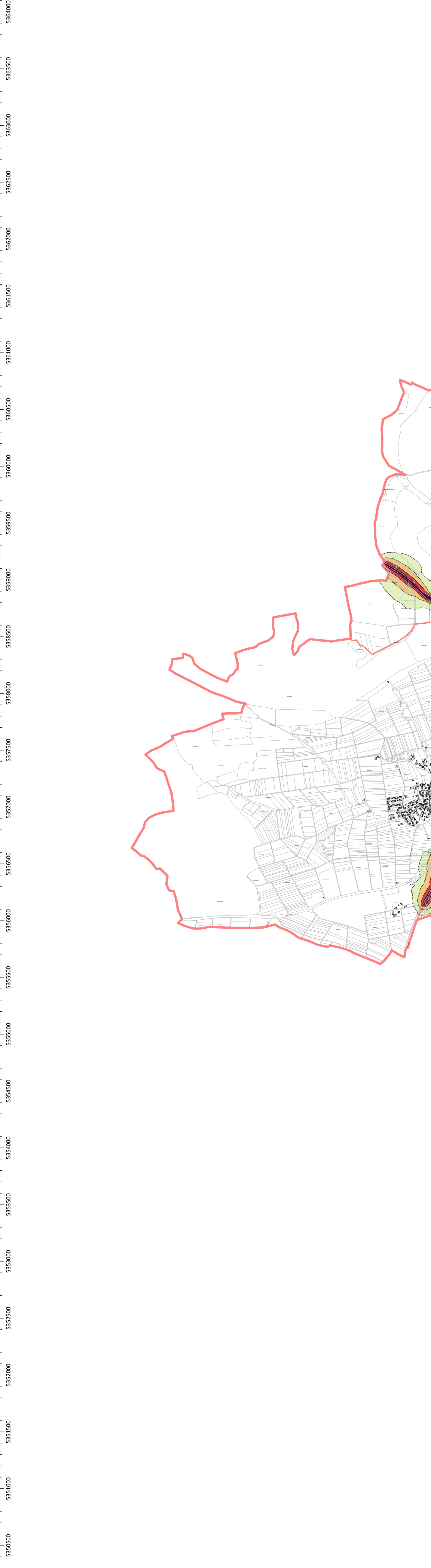


Objekte Straße Kreuzung Haus Schirm Brücke	Lärmindex ab 55 dB bis 59 dB ab 60 dB bis 64 dB ab 65 dB bis 69 dB ab 70 dB bis 74 dB ab 75 dB	 M 1:20000
	Berechnungshöhe: 4 m Rasterauflösung: 10 m x 10 m	



Objekte	— Straße	Lärmindex	■ ab 50 dB bis 54 dB
	⊠ Kreuzung		■ ab 55 dB bis 59 dB
■ Haus	■ ab 60 dB bis 64 dB	Berechnungshöhe: 4 m Rasterauflösung: 10 m x 10 m	■ ab 65 dB bis 69 dB
— Schirm	■ ab 70 dB		
⊠ Brücke			



M 1:20000

Geobasisdaten der Stadt Ulm © Stadt Ulm, Abteilung Vermessung

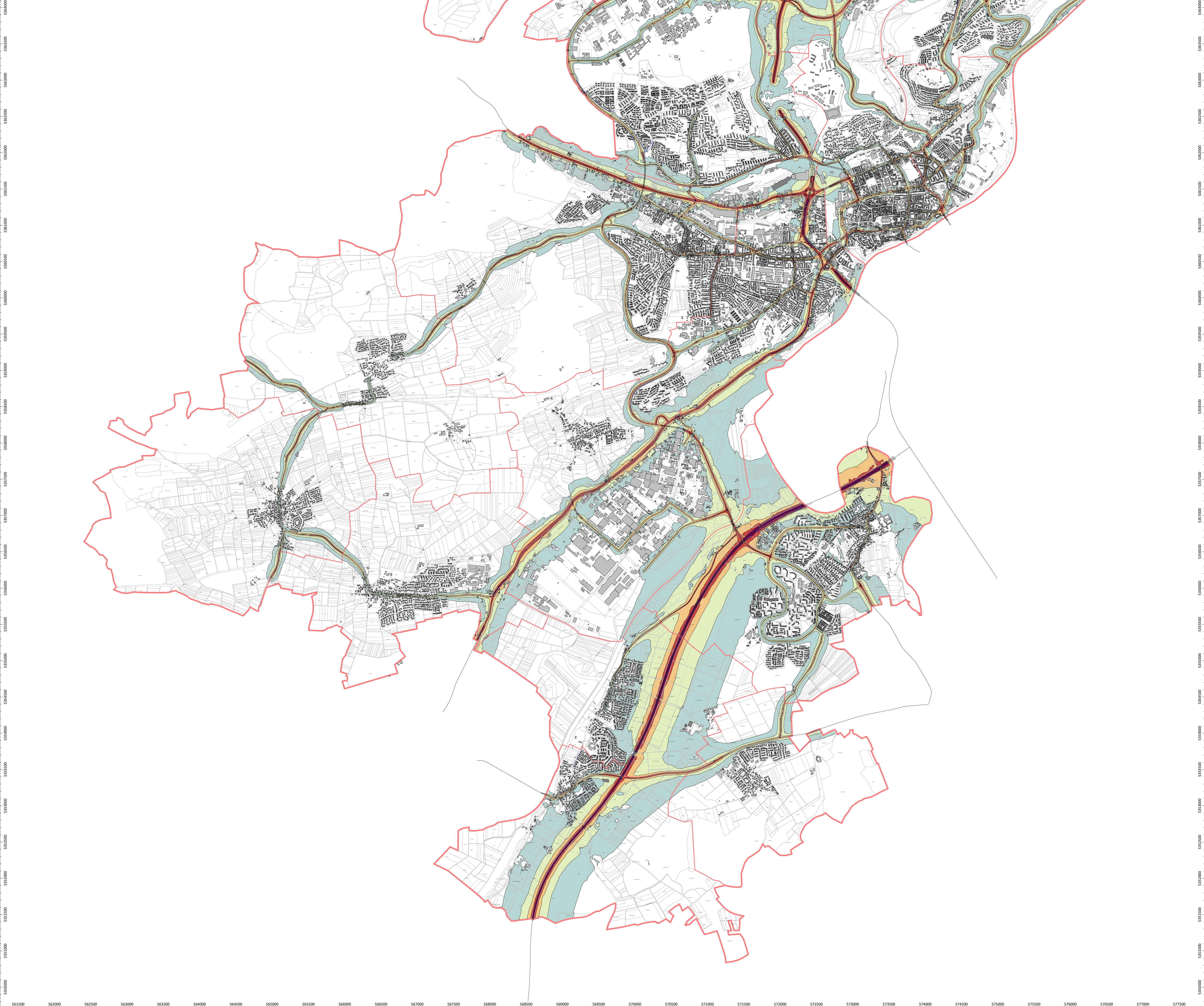
Bearbeitung:
schall.tech
Ingenieurbüro Fend
86316 Friedberg
www.schall.tech



Bericht Nr. 160-108/02

Stand: 04.08.2023

Anlage 1.2

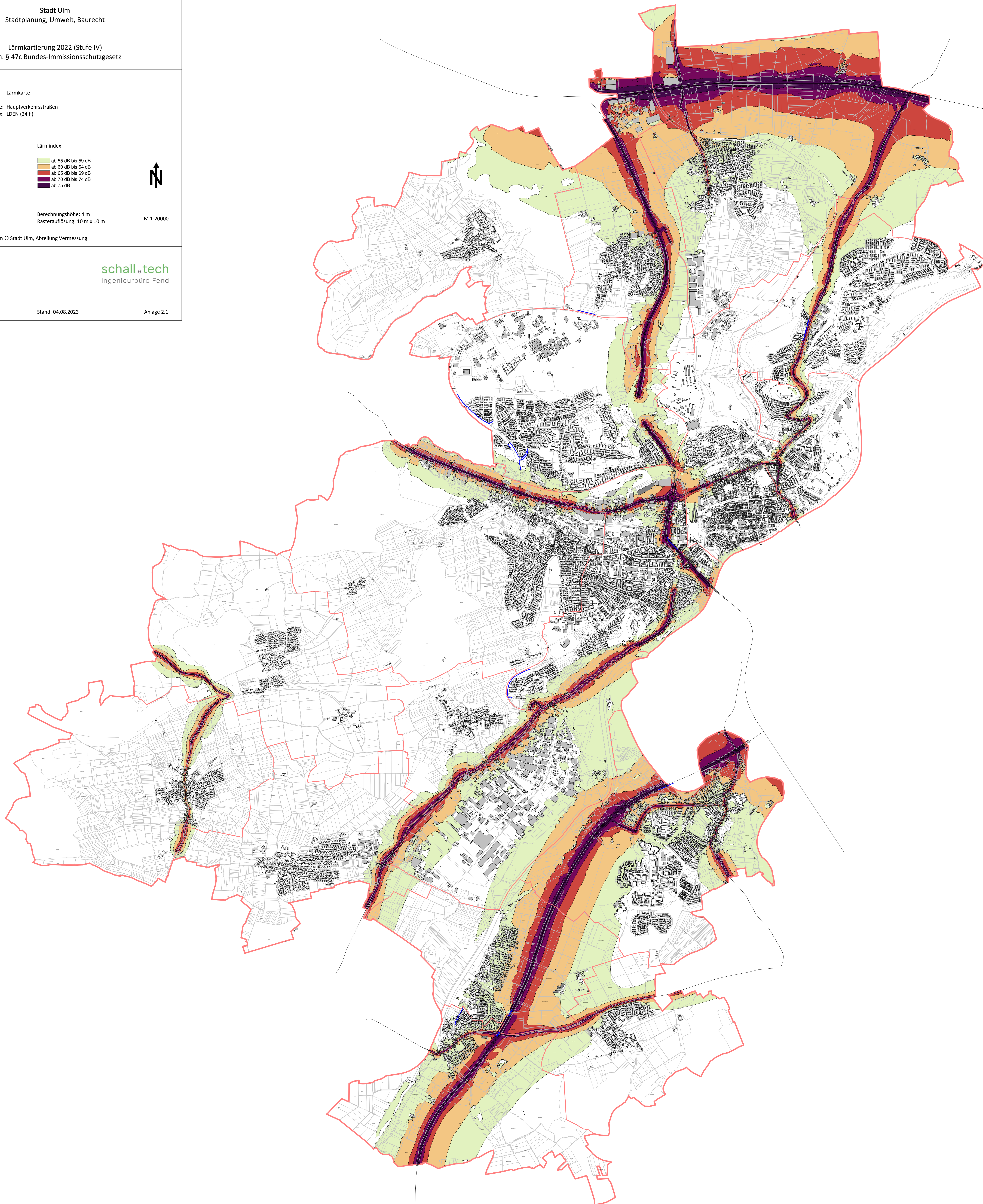


Objekte	Lärmindex
— Straße	ab 55 dB bis 59 dB
⊠ Kreuzung	ab 60 dB bis 64 dB
■ Haus	ab 65 dB bis 69 dB
— Schirm	ab 70 dB bis 74 dB
▨ Brücke	ab 75 dB

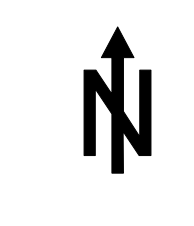


M 1:20000

Berechnungshöhe: 4 m
Rasterauflösung: 10 m x 10 m



Objekte	Lärmindex
— Straße	ab 45 dB bis 49 dB
⊠ Kreuzung	ab 50 dB bis 54 dB
■ Haus	ab 55 dB bis 59 dB
— Schirm	ab 60 dB bis 64 dB
▨ Brücke	ab 65 dB bis 69 dB
	ab 70 dB




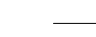







M 1:20000

Geobasisdaten der Stadt Ulm © Stadt Ulm, Abteilung Vermessung

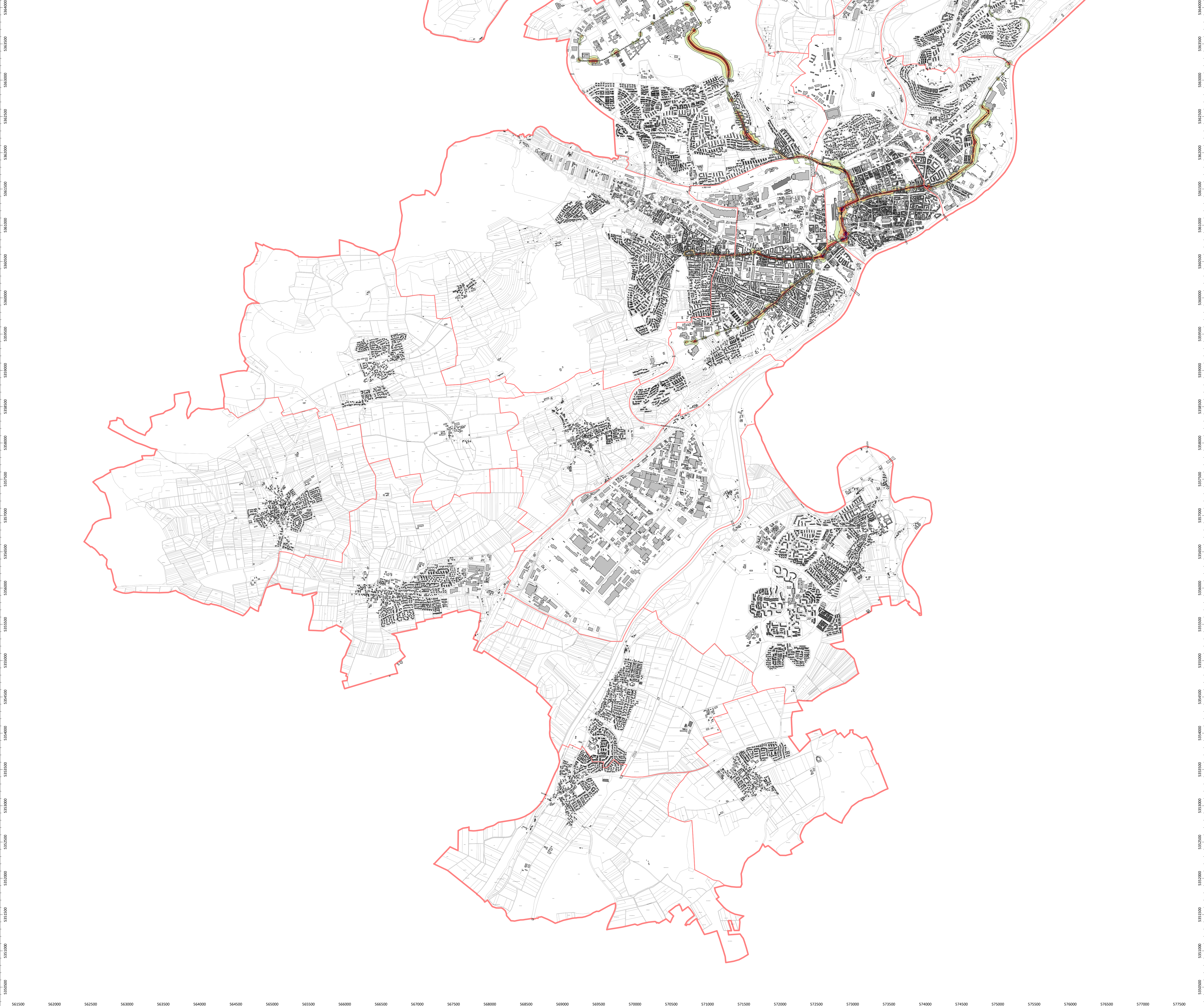
Bearbeitung:
schall.tech
Ingenieurbüro Fend
86316 Friedberg
www.schall.tech


Bericht Nr. 160-108/02 Stand: 04.08.2023 Anlage 2.2



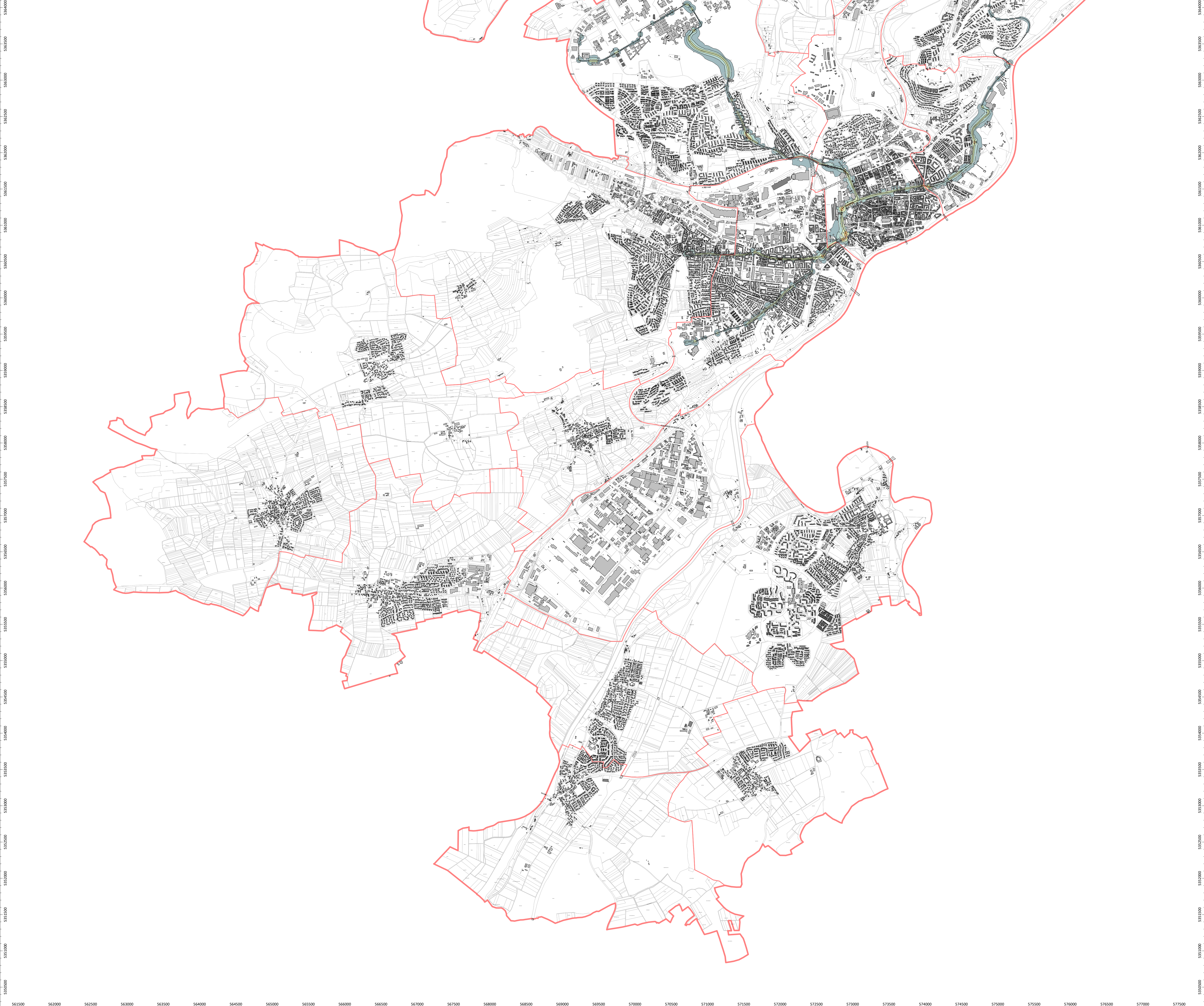
Objekte	Lärmindex	 M 1:20000
 Schiene  Haus  Brücke	 ab 55 dB bis 59 dB  ab 60 dB bis 64 dB  ab 65 dB bis 69 dB  ab 70 dB bis 74 dB  ab 75 dB	









Berechnungshöhe: 4 m
Rasterauflösung: 10 m x 10 m



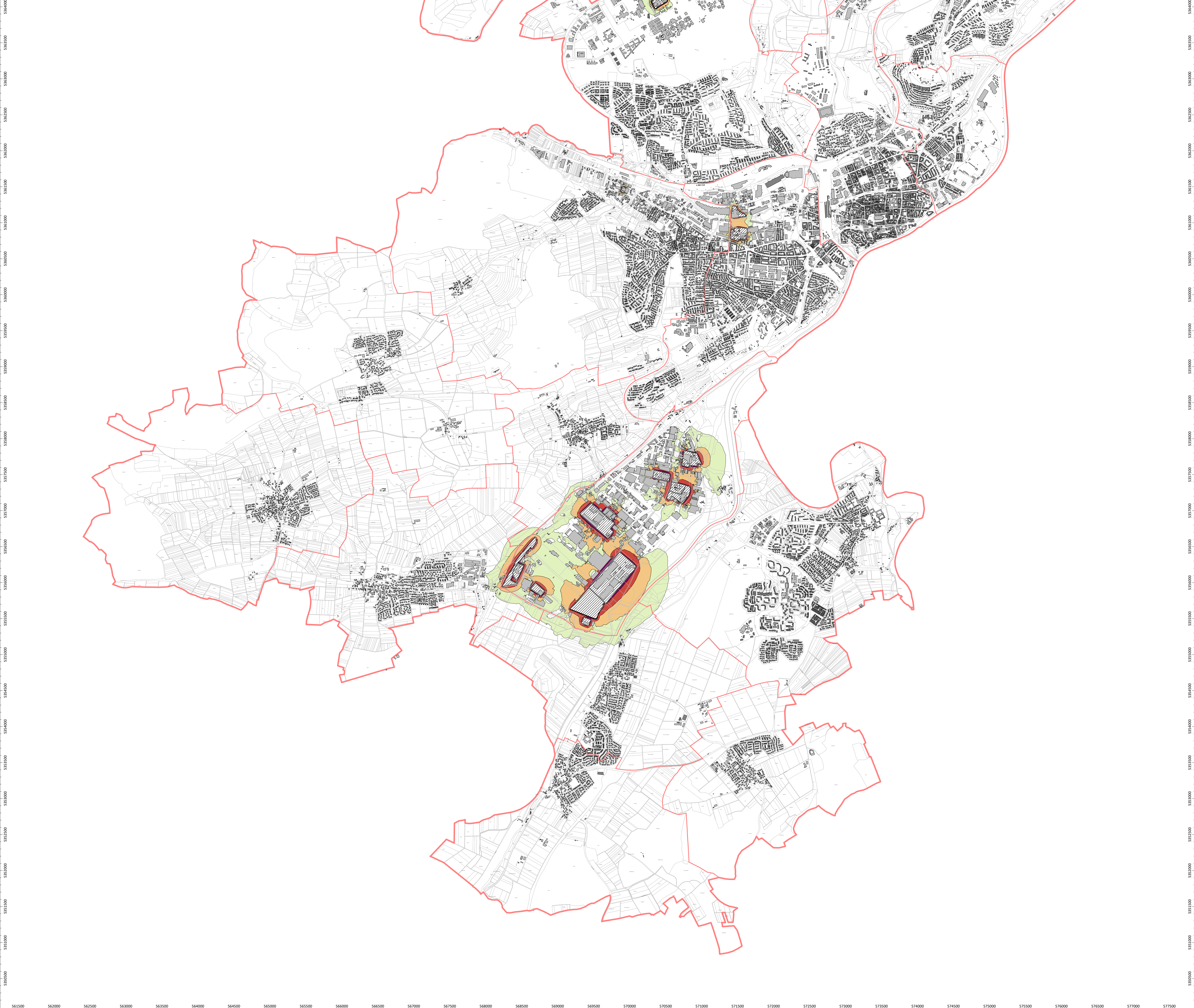
Objekte	Lärmindex	 M 1:20000
<ul style="list-style-type: none">SchieneHausBrücke	<ul style="list-style-type: none">ab 45 dB bis 49 dBab 50 dB bis 54 dBab 55 dB bis 59 dBab 60 dB bis 64 dBab 65 dB bis 69 dBab 70 dB	










Berechnungshöhe: 4 m
Rasterauflösung: 10 m x 10 m



Objekte	Lärmindex	 M 1:20000
 Flächenquelle  Haus	 ab 55 dB bis 59 dB  ab 60 dB bis 64 dB  ab 65 dB bis 69 dB  ab 70 dB bis 74 dB  ab 75 dB	

Berechnungshöhe: 4 m
Rasterauflösung: 10 m x 10 m



Objekte	Lärmindex	 M 1:20000
 Flächenquelle  Haus	 ab 45 dB bis 49 dB  ab 50 dB bis 54 dB  ab 55 dB bis 59 dB  ab 60 dB bis 64 dB  ab 65 dB bis 69 dB  ab 70 dB	

Berechnungshöhe: 4 m
Rasterauflösung: 10 m x 10 m

