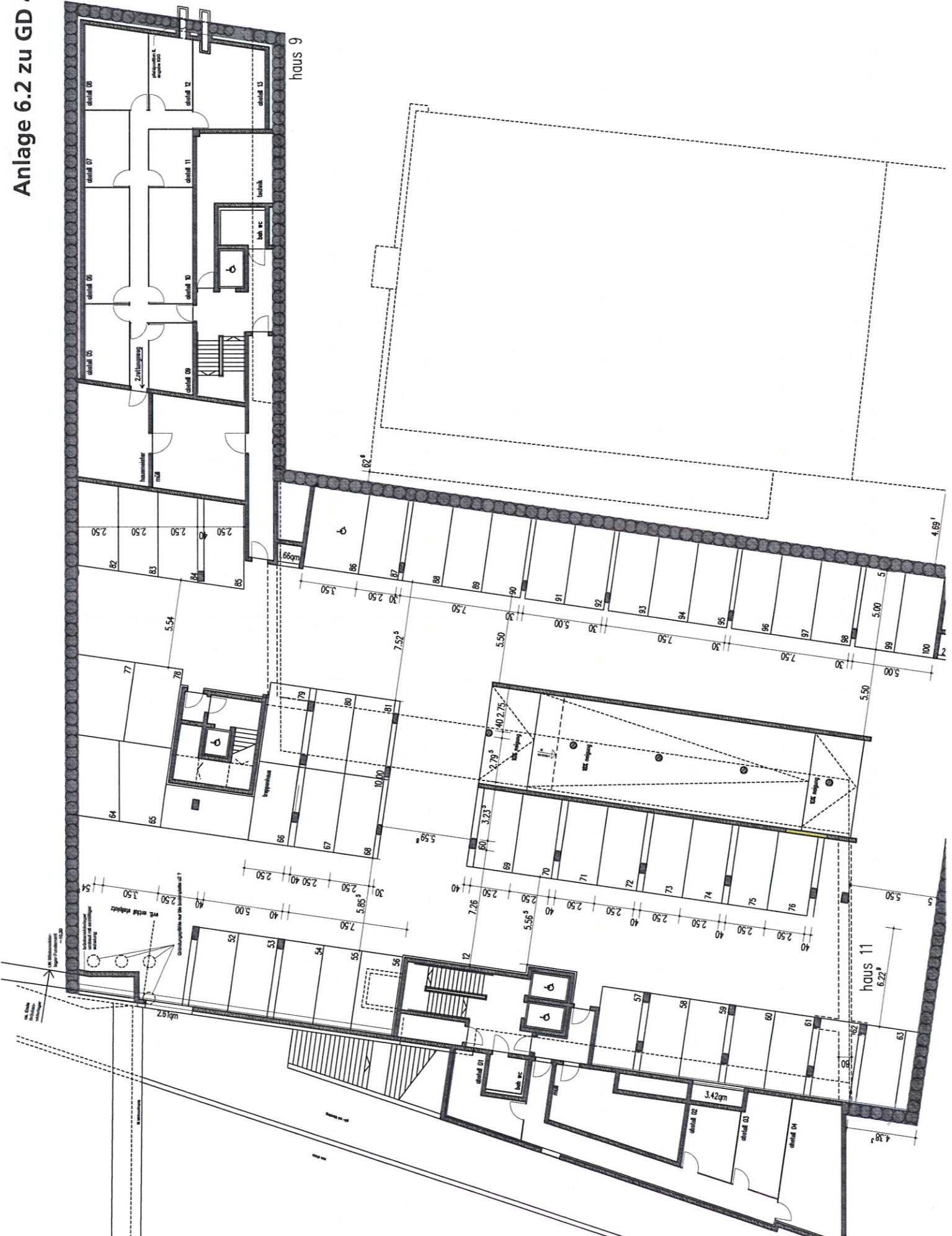




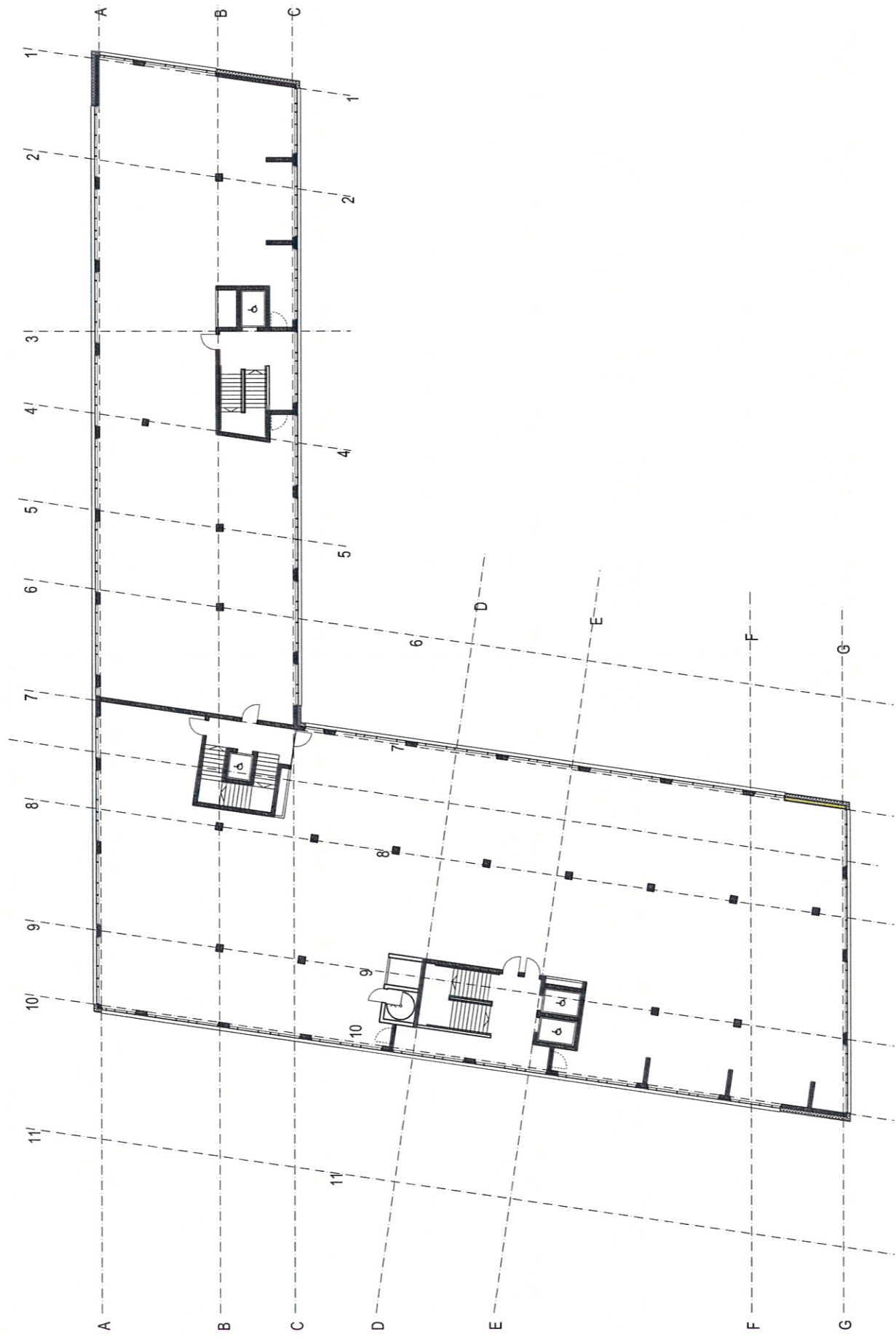
Anlage 6.2 zu GD 424/10

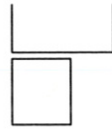
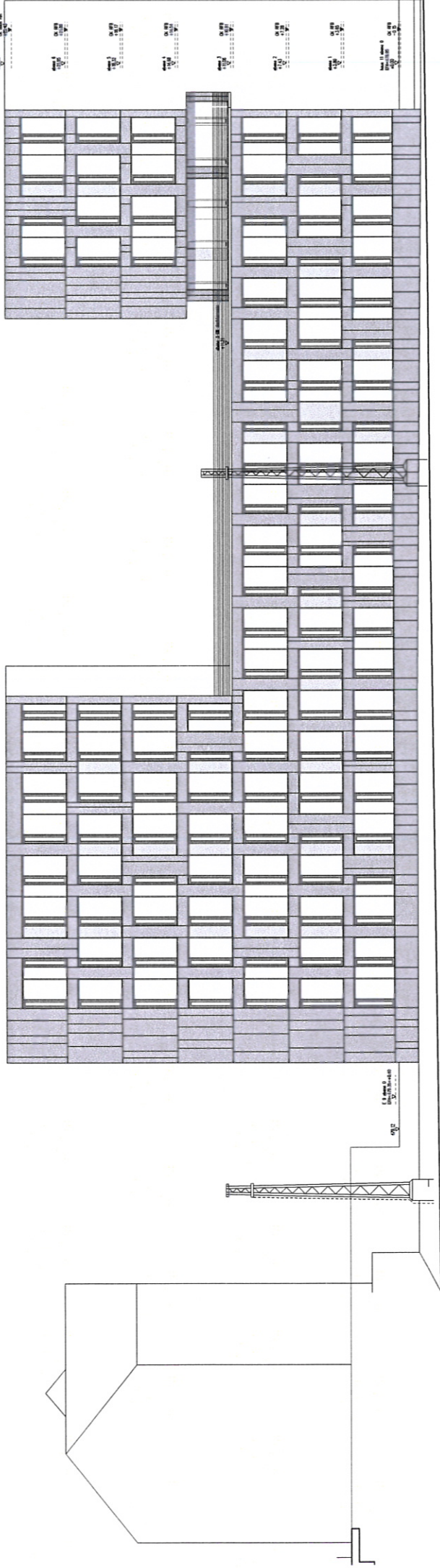


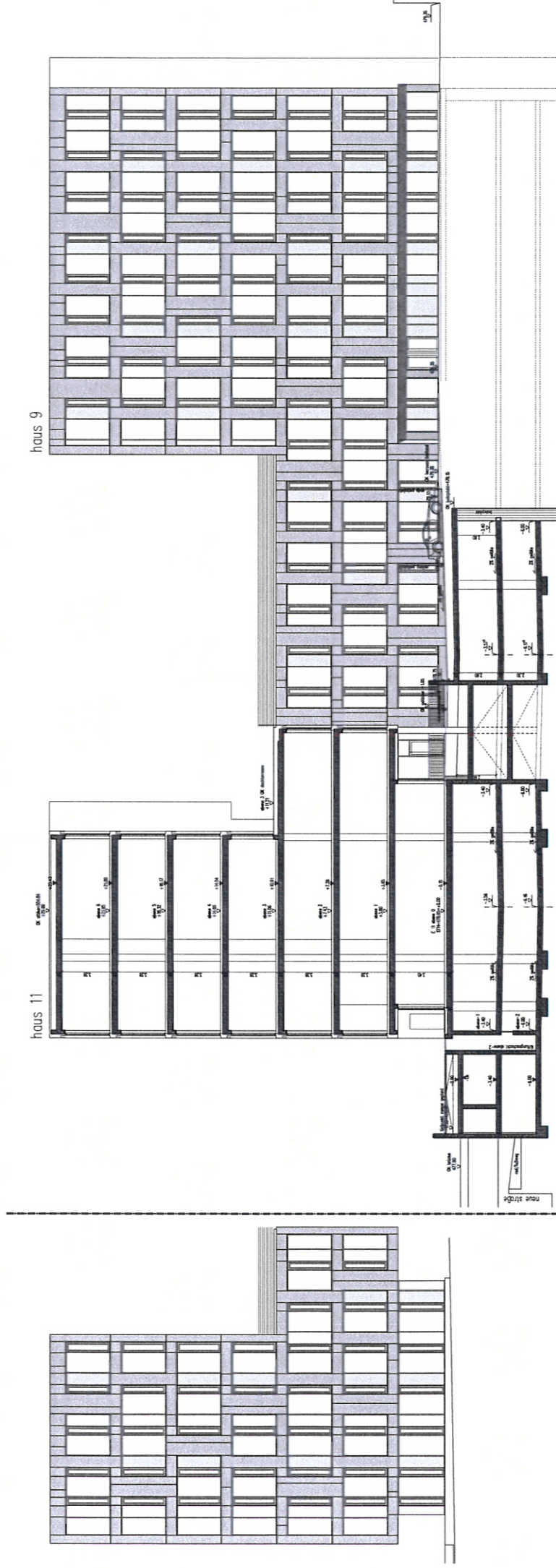


14.10/2010

grundriss ebene 0 1:250







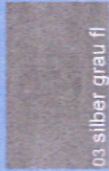


MS Immo Ulm GmbH & Co.KG

Das UZ ehinger straÙe 9+11, ulm

Anlage 6.7 zu GD 424/10

architekten BDA mhlich, fink & partner ulm



03 silber grau ff



07.10.2010

perspektive