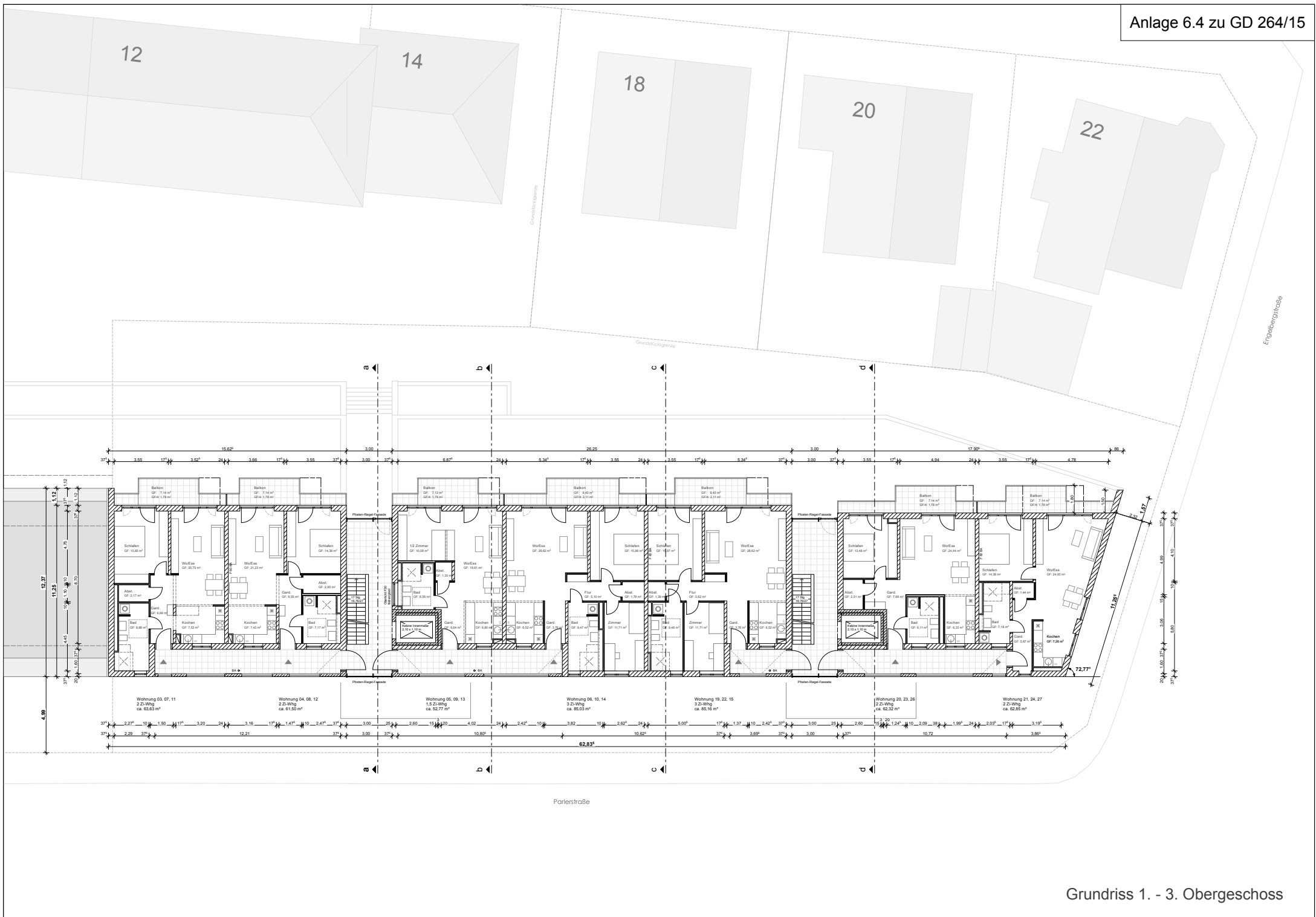
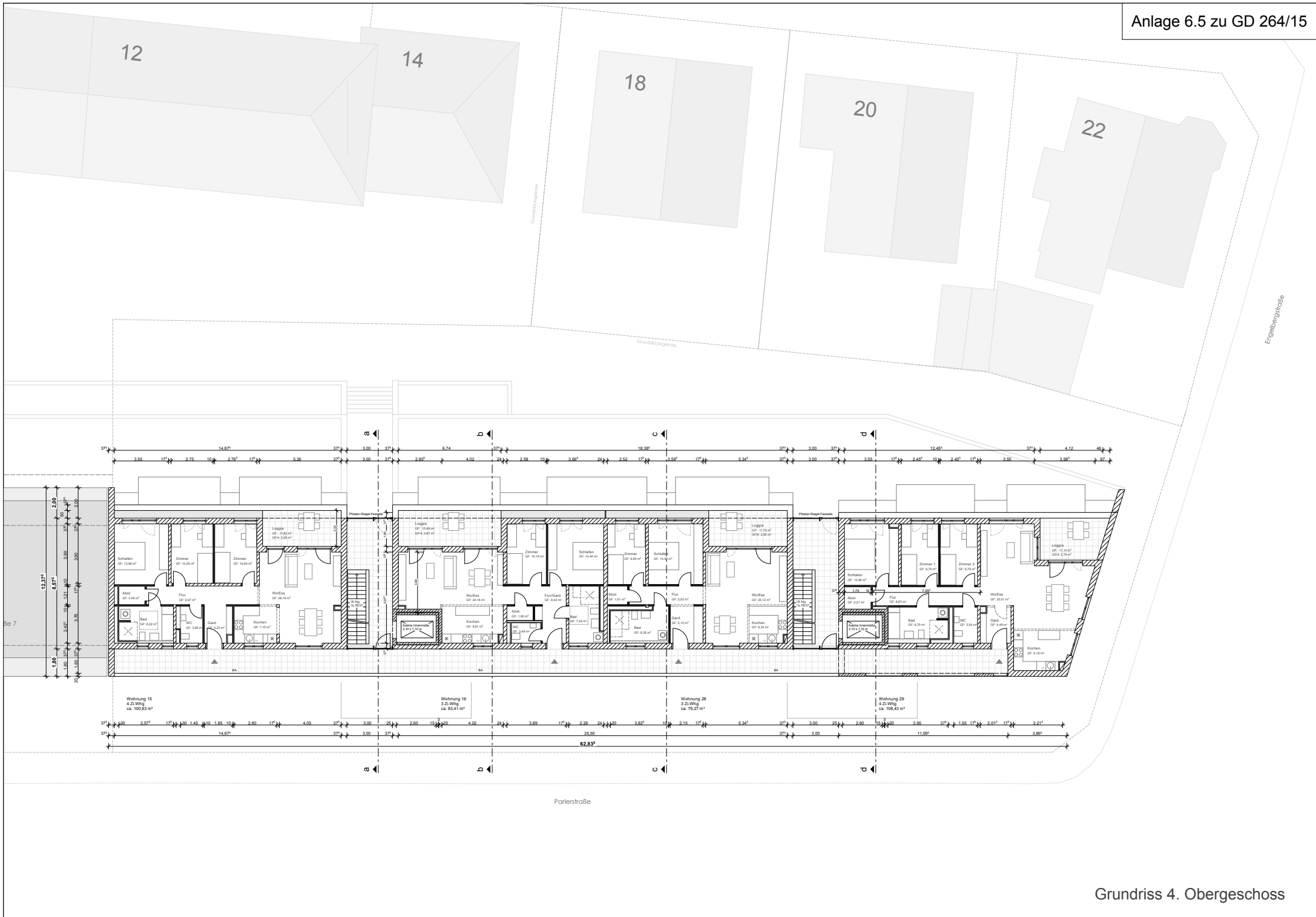


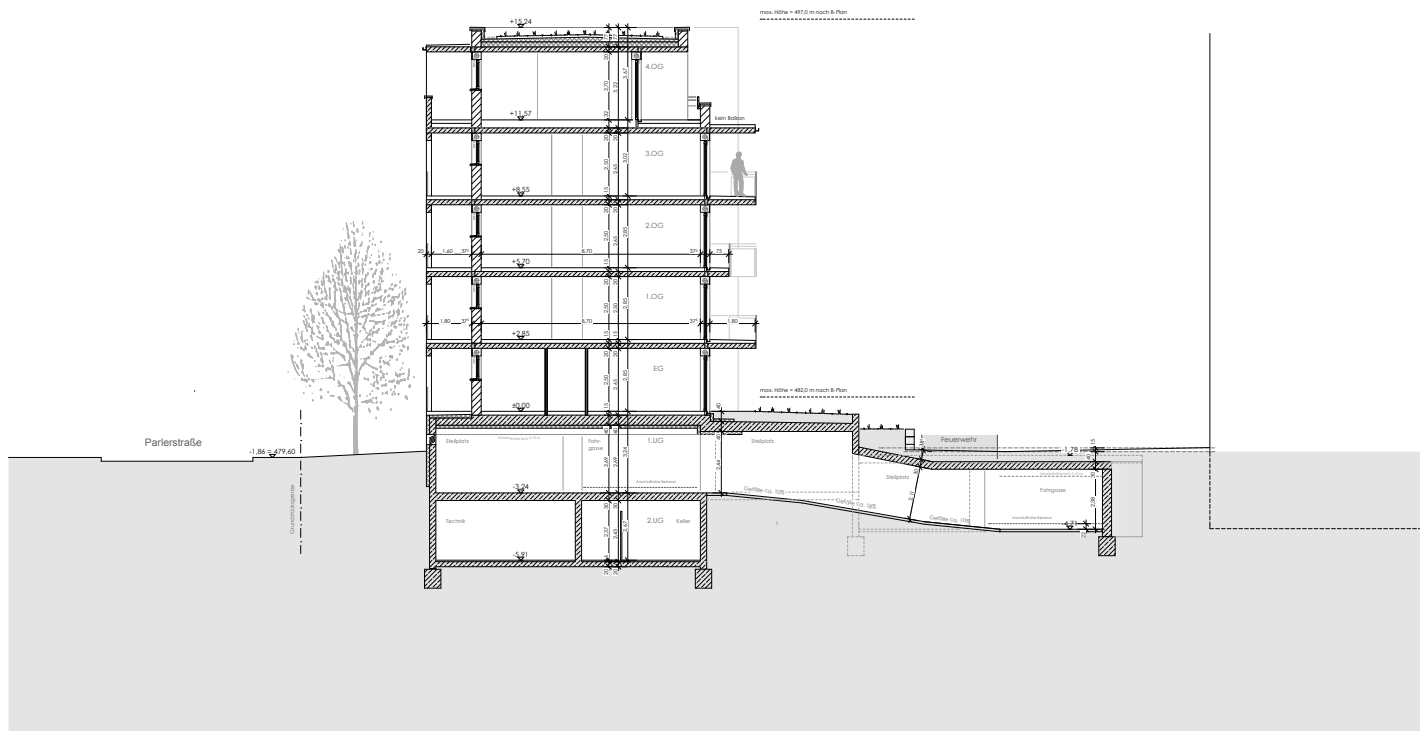
Grundriss Erdgeschoss



Grundriss 1. - 3. Obergeschoss



Grundriss 4. Obergeschoss





-1.74 + 49.70

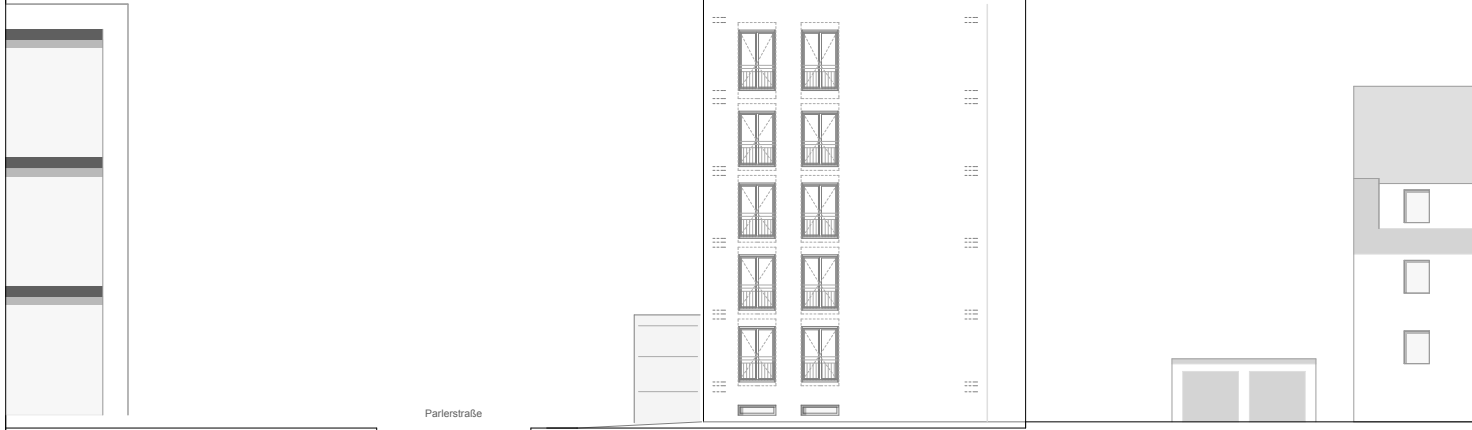
▲ Zugang

Parlerstraße

▲ Zugang

▼ Ausfahrt TG

Engelbergstraße



Parlerstraße

Engelbergstraße

Ansicht "Parlerstraße"  
Ansicht "Engelbergstraße"



Engelbergstraße

Innenhof

Ansicht "Innenhof"