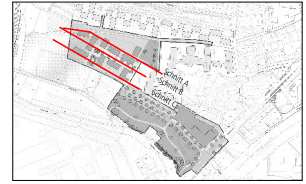
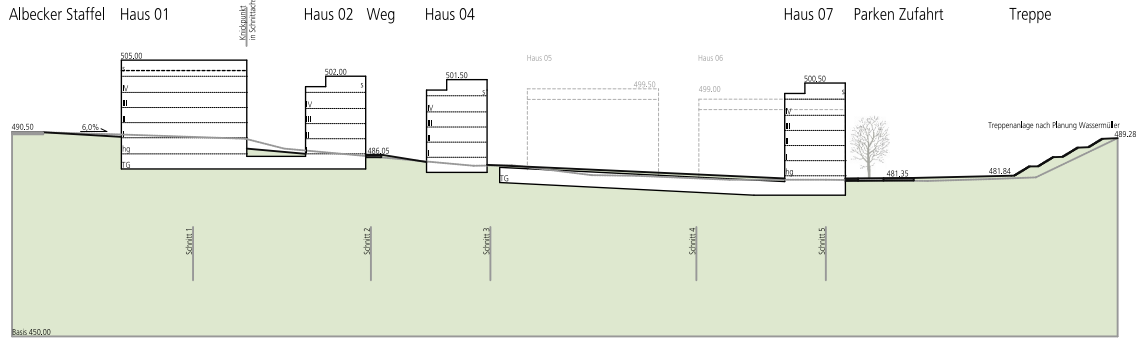


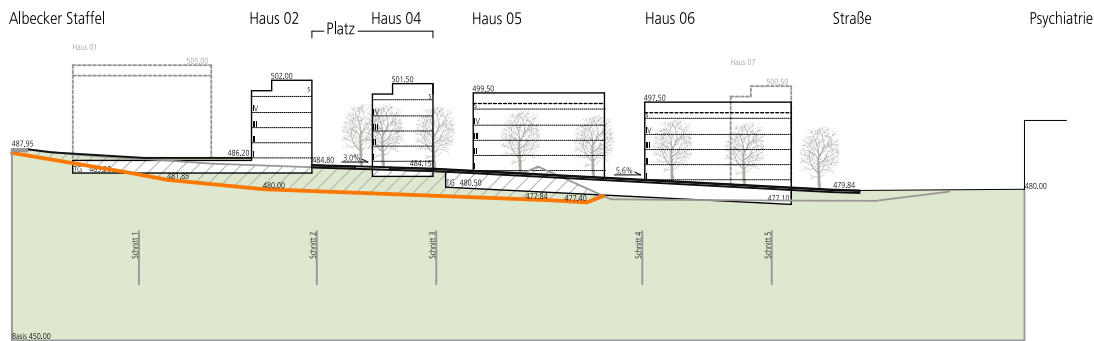
## Schnitt A, B, C



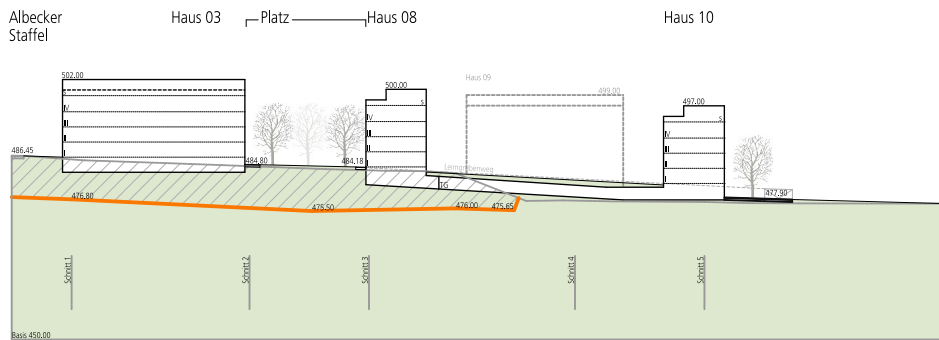
### Schnitt A



### Schnitt B

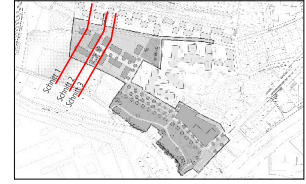


### Schnitt C

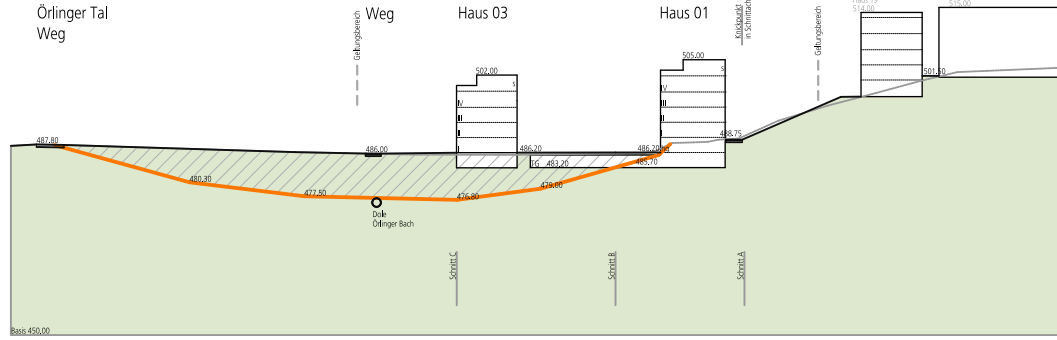


— Sohle Abfließgerinne

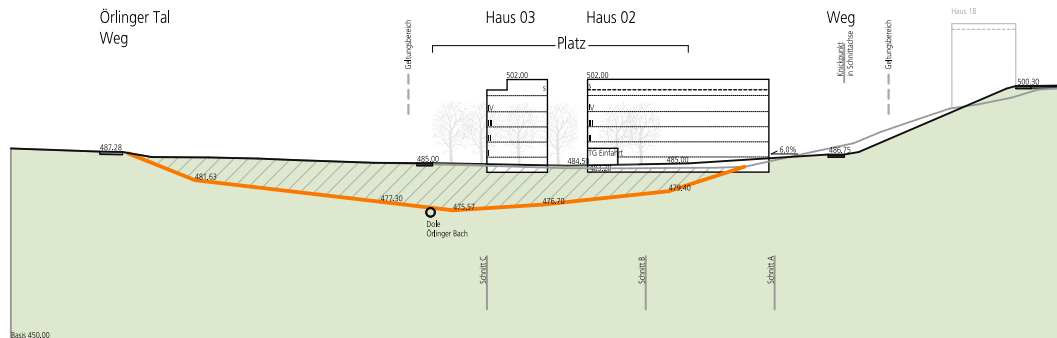
## Schnitt 1, 2, 3



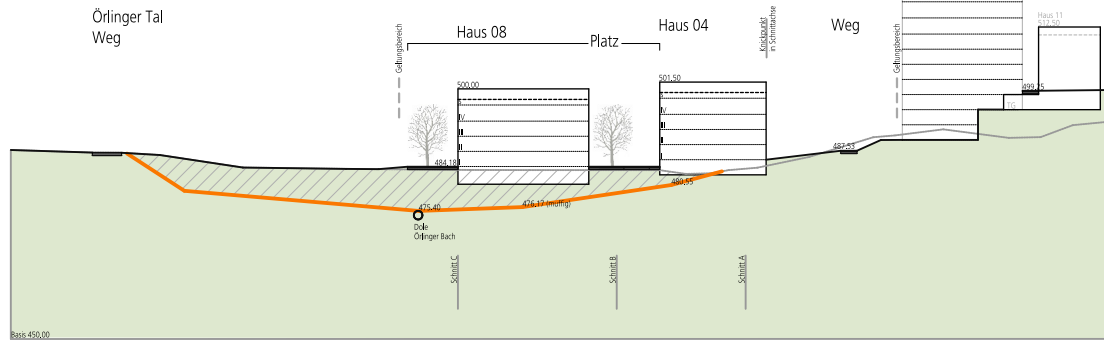
### Schnitt 1



### Schnitt 2



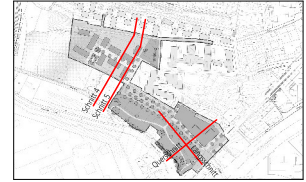
### Schnitt 3



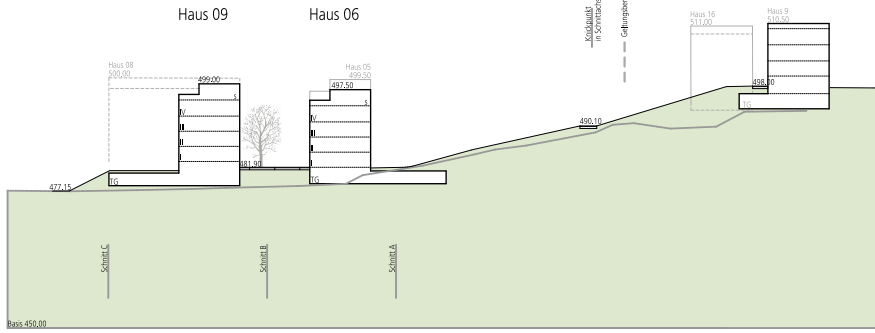
— Sohle #1246genung

# Schnitte "Safranberg - Leimgrubenweg"

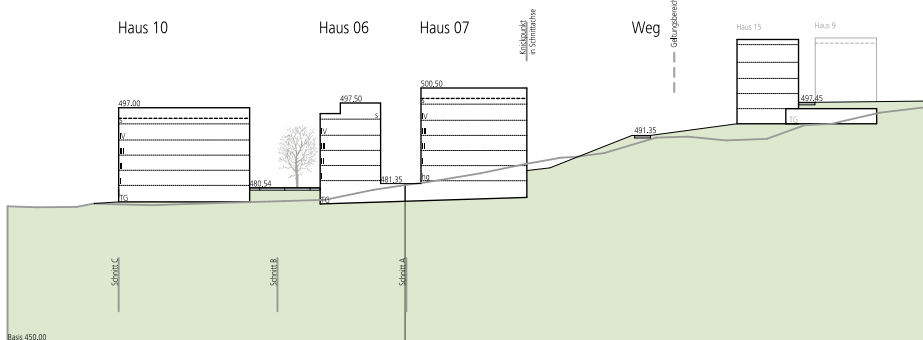
## Schnitt 4, 5, Schnitte Retentionsbecken



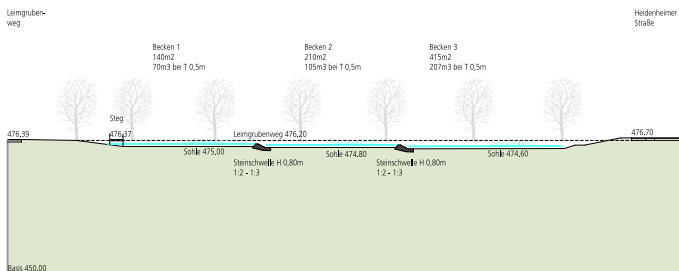
Schnitt 4



Schnitt 5



Längsschnitt Retentionsbecken



Querschnitt Retentionsbecken

