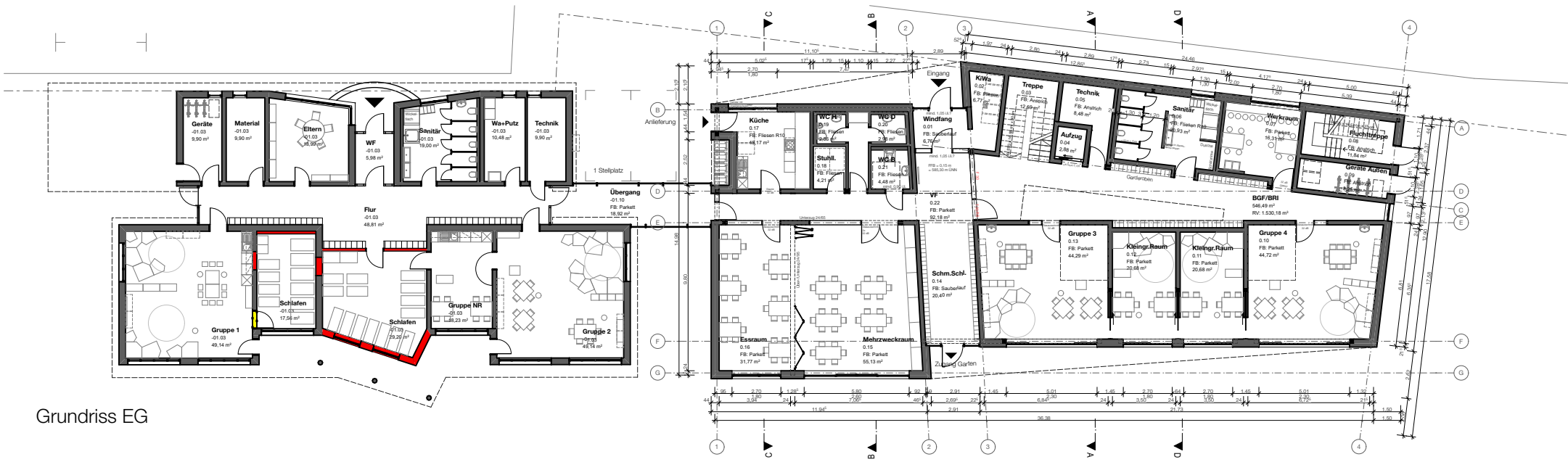
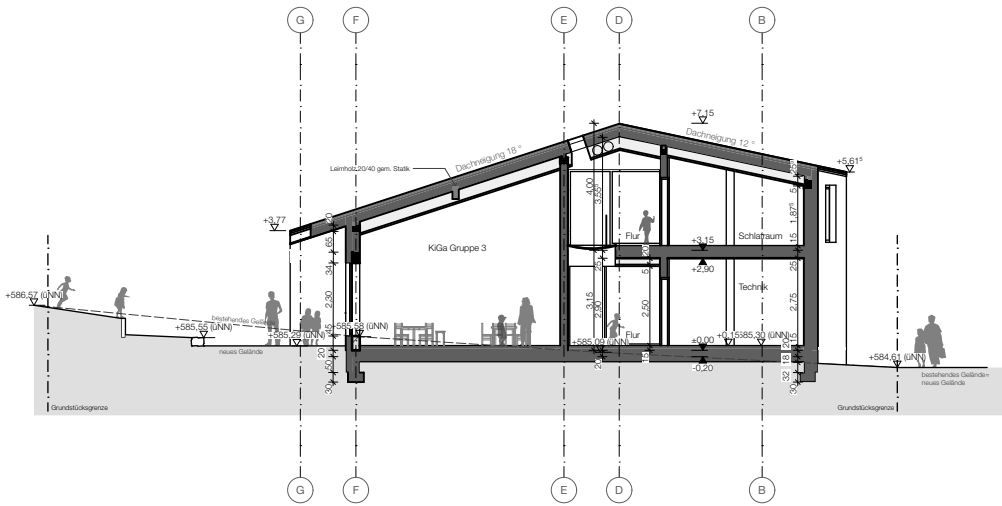


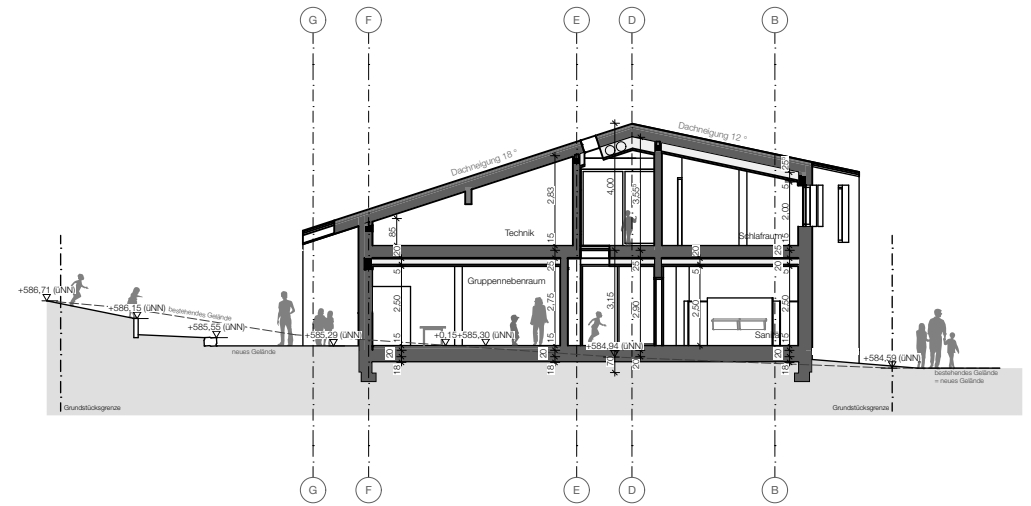
Grundriss OG



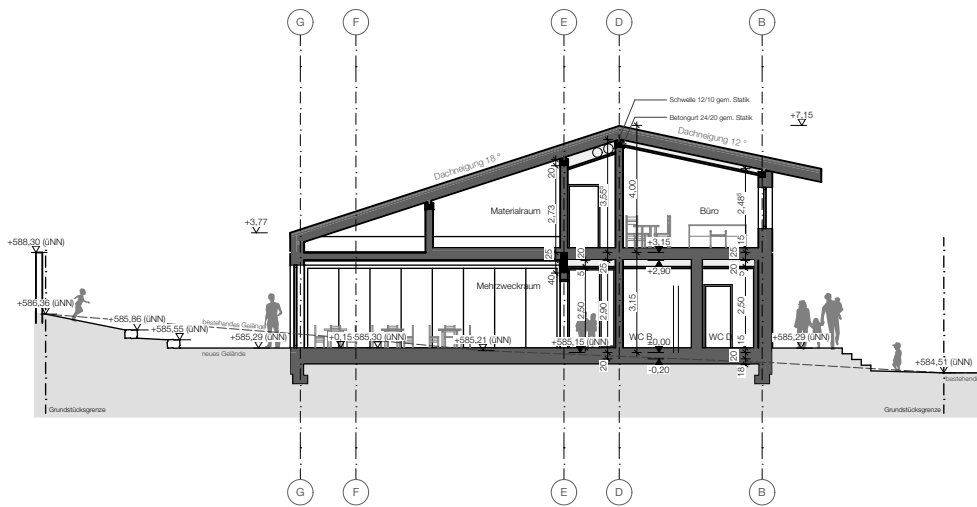
Grundriss EG



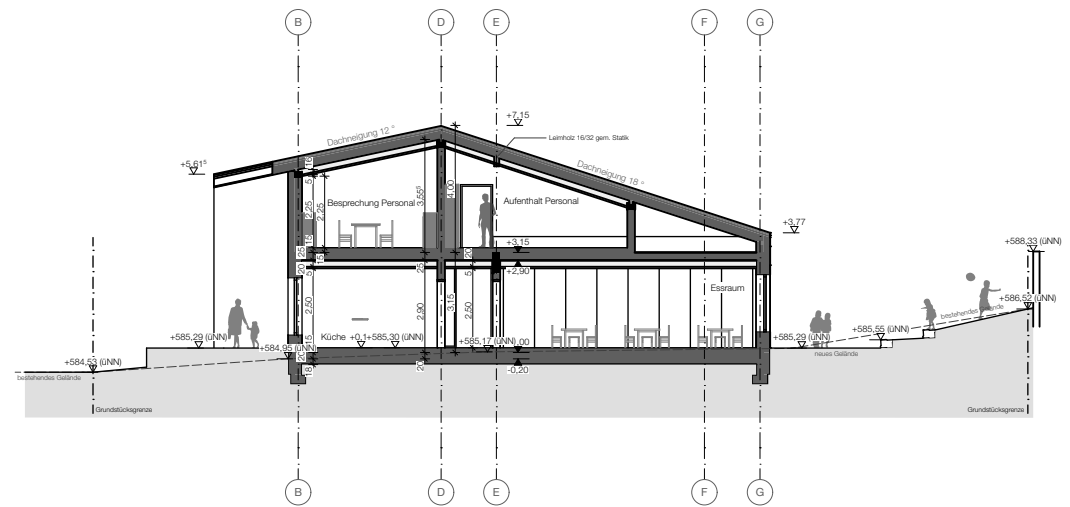
Schnitt A-A | Gruppenraum



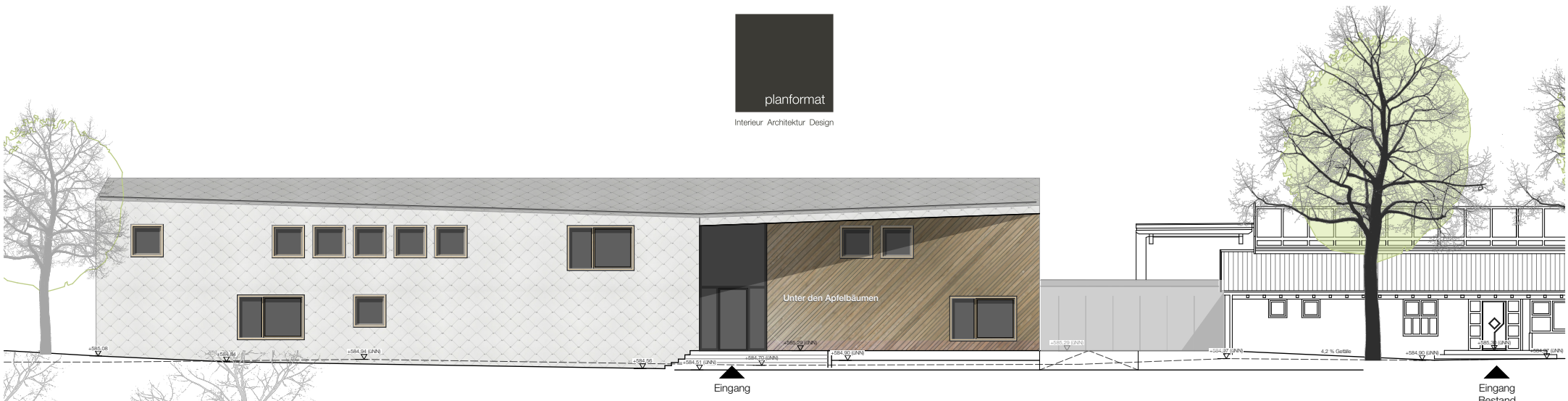
Schnitt D-D | Technik



Schnitt B-B | Mehrzweckraum



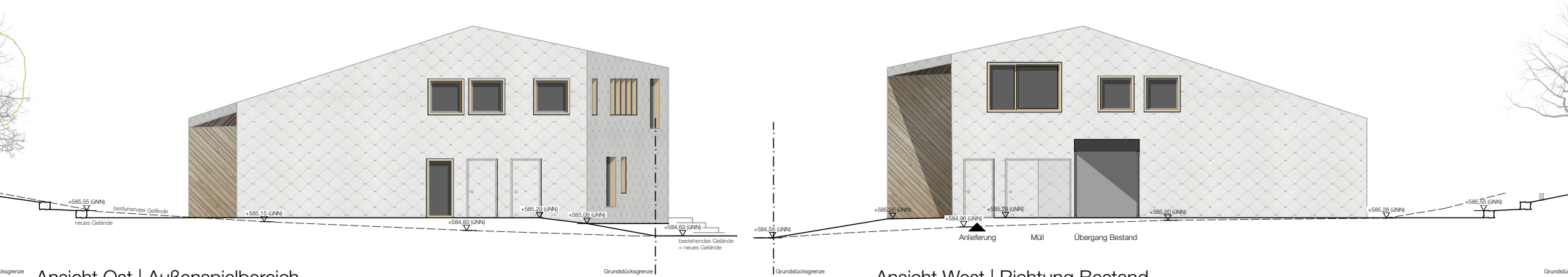
Schnitt C-C | Personalbereich/Essraum



Ansicht Nord | Eingangsbereich



Ansicht Süd | Außenspielbereich



Ansicht Ost | Außenspielbereich

Ansicht West | Richtung Bestand